

# PLANNER

The Bi-Monthly Guide to PBS Michiana - WNIT | Issue No. 6 November - December 2024



# LEONARDO DA VINCI

A FILM BY KEN BURNS,  
SARAH BURNS AND DAVID McMAHON

PREMIERES MON NOV 18 8/7c  PBS.



GO GREEN WITH US  
See Page 18 for Details

# Board of Directors

Chair  
Susan Ohmer, Ph.D.  
Vice Chair  
Joel Duthie  
Treasurer  
William J. Schmuhl, Jr.  
Secretary  
Duane Wilson

Directors  
Dallas Bergl  
Hayley G. Boling  
Kyra Clark  
Trent Grocock  
Lynn Haller  
Lowell Hamel, M.D.  
Brian Inniger  
John Lloyd  
Dr. Christine Maziar  
Pat Moody  
Gary Morseau  
Mike Pound  
James Summers  
Jill Long Thompson  
Don Wycliff  
Linda Yoder  
John Zeglis

President and  
General Manager  
(Ex-Officio Board Member)  
Greg Giczi

Charter Directors  
Arthur J. Decio\*  
Jerry Hammes  
Ernestine M. Raclin\*  
Jane Warner\*  
Dar Wiekamp\*

Honorary Life Directors  
Mary Louise Miller  
Carmi Murphy  
Thomas Slager\*\*

\*Deceased Charter Director

\*\*Deceased

## A Message from Greg Giczi

President and GM, PBS Michiana - WNIT



Hello PBS Michiana-WNIT Peeps:

Thank you for all you do to support this public broadcasting station as a donor and a booster! We appreciate it and work hard to provide an inspiring viewing experiences from the youngest to the oldest.

It's time to say "Happy Holidays!" I believe the official holiday season starts with Halloween and runs through Super Bowl Sunday. I guess that is a guy's way of thinking. I love decorating with lighting, these new LED bulbs that can change color through a phone app have been a lot of fun. For example, when Notre Dame wins a football game, my porch lights go green. If they lose, I don't turn them on.

Our 50<sup>th</sup> Anniversary Year celebration continues and I am grateful for all the extra gifts you've been sending. Some are small and some are larger, but they all add up, and I appreciate your goodwill. We're raising additional funds to replace some very old equipment, to bolster our educational outreach programs, and develop new original productions focused on our region. Many of you will be making charitable gifts by the end of the year. Let me suggest that you make an extra gift at the same level as your annual gift. That would go a long way to hitting our goal.

With the upcoming holiday season, we will have lots of special programming. Keep in mind that our WNIT2 channel (34.2 on antenna) complements our primary channel. And, if you are a Passport member, a whole library of on-demand programming becomes available. Please go through your PBS Michiana-WNIT *Planner* magazine and highlight your "must-see" shows. I'm going to touch on some that caught my eye.

*The Wild Rose Moon Hour*, produced at a live performance in downtown Plymouth, IN, makes its monthly appearance on Saturday, November 2<sup>nd</sup> at 10pm. November is Native American Heritage Month. All during the month, PSB Michiana-WNIT will feature a Potawatomi "Word of the Day." We'll also encore our original production, *Pokagon Band of Potawatomi: A Song for Everything*, Thursday, November 7<sup>th</sup>, at 8pm. More local history comes your way the following Thursday, November 14<sup>th</sup>, at 8pm, when we also encore *Then, Now, and Always...The St. Joseph River Story*.

Our December membership drive starts on Thanksgiving Weekend. Many of the programs will be a good alternative to football games. I've got the new "My Music" 60s & 70s Soul Celebration program on Saturday, November 30<sup>th</sup> at 7pm on my personal schedule. We're back to our normal schedule on December 9<sup>th</sup> where we start our run of holiday music specials during Thursday of that week. Jumping to December 25<sup>th</sup>, *Call the Midwife* has another special program for the holidays.

There's just too much to talk about! Please flip through the pages of this *PBS Michiana-WNIT Planner* magazine you have in your hands. It's a terrific two months of programming.

Happy holidays, everyone. I appreciate every one of you!

Best wishes,

A handwritten signature in black ink, appearing to read "Greg Giczi".

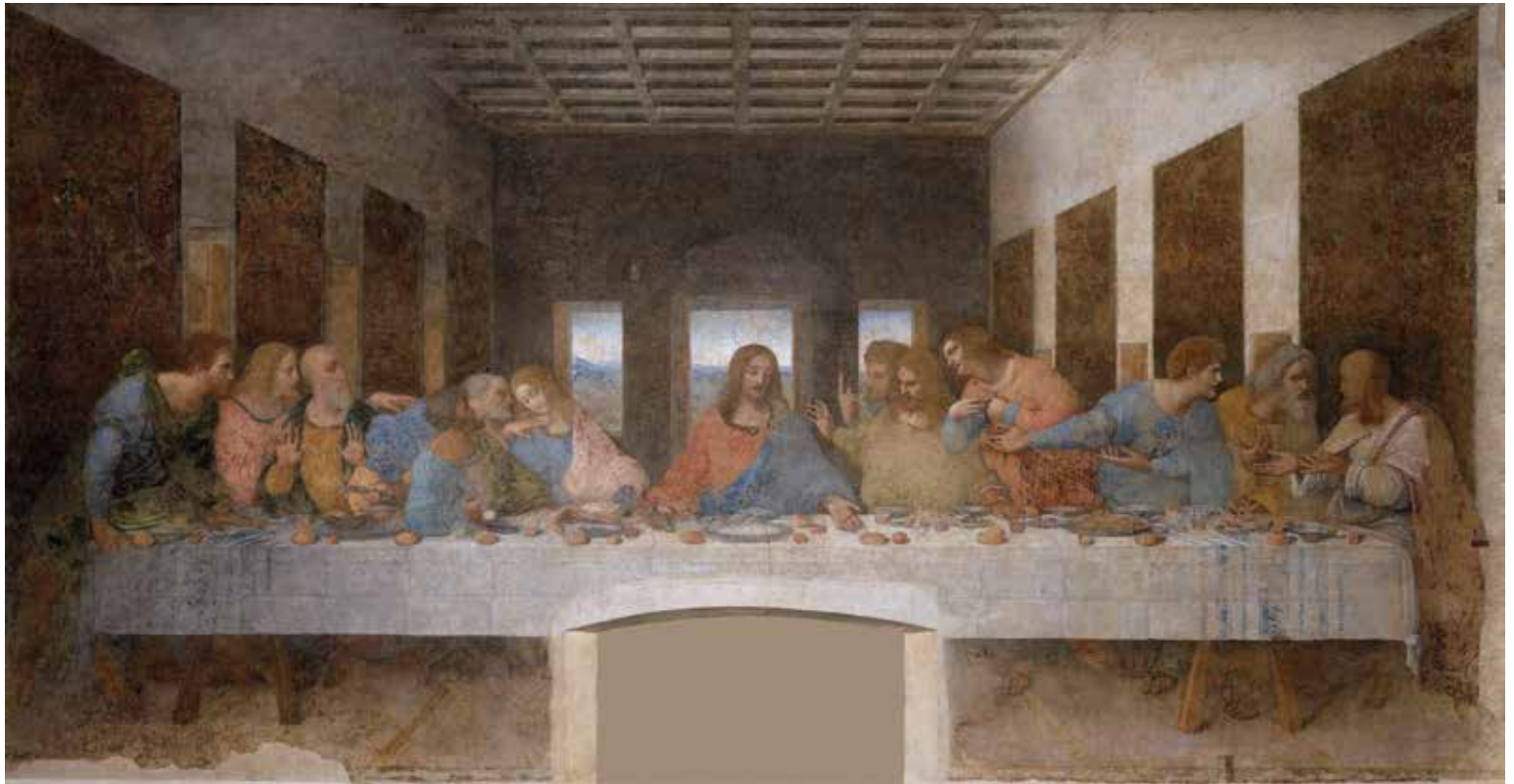
Greg Giczi  
President & General Manager  
Sustaining Member  
Directors' Circle Member

# What's Inside?

Worth Watching November	6
November Daytime 34.1 & 34.2	9
November Primetime 34.1 & 34.2	10
November Overnight 34.1	12
November Overnight 34.2	13
Worth Watching December	16
Membership Corner	18

December Daytime 34.1 & 34.2	19
December Primetime 34.1 & 34.2	20
December Overnight 34.1	22
December Overnight 34.2	23
Kids Club	24
Children's Programming	26
Directors' Circle	31
Supporters	32

## On the Cover



Set against the rich and dynamic backdrop of Renaissance Italy at a time of skepticism and freethinking, regional war and religious upheaval, *LEONARDO da VINCI* brings the artist's towering achievements to life through his prolific personal notebooks, primary and secondary accounts of his life, and on-camera interviews with modern scholars, artists, engineers, inventors and admirers.

*LEONARDO da VINCI*, a new, two-part, four-hour documentary directed by Ken Burns, Sarah Burns and David McMahon will air Nov. 18 and 19 at 8-10pm.

The broadcast of *LEONARDO da VINCI* will be accompanied by educational materials for middle and high school classrooms, highlighting recent research and perspectives. The materials will be available at the *Ken Burns in the Classroom* hub on [PBS LearningMedia](#). These materials include media-rich resources, including videos, primary sources, and classroom materials to allow grade 5-12 educators to easily bring the materials into their Social Studies, English Language Arts, and Science classrooms. Resources will present opportunities for educators and students to explore the film's key topics and themes, including Leonardo's innovative spirit and his wide-ranging accomplishments against the backdrop of Renaissance Italy.

# WNIT Channel Guide

	COMCAST			DISH/DIRECTV OR AT&T U-VERSE *		MEDIACOM		
	SD	HD	SD 34.2	SD	HD	SD	HD	SD 34.2
INDIANA								
Argos	-	-	371	34	-	4	704	120
Bourbon	-	-	371	34	-	4	704	120
Bremen	-	-	371	34	-	4	704	120
Bristol	10	191	371	34	-	-	-	-
Culver	-	-	371	34	-	4	704	120
Elkhart	10	191	371	34	-	-	-	-
Goshen	10	191	371	34	-	-	-	-
Jefferson Township	10	191	371	34	1034	-	-	-
Knox	-	-	371	34	1034	4	704	120
LaGrange County	-	-	371	34	1034	3	704	-
Lakeville	-	-	371	34	1034	4	704	120
LaPaz	-	-	371	34	1034	4	704	120
LaPorte (city)	-	26	371	34	1034	-	-	-
LaPorte County (Eastern)	10	191	371	34	1034	-	-	-
LaPorte County (Western)	-	26	371	34	1034	-	-	-
Leesburg	-	-	-	-	-	4	704	120
Michigan City	-	26	371	34	1034	-	-	-
Middlebury	10	191	371	34	1034	-	-	-
Milford	-	-	-	-	-	4	704	120
Mishawaka	10	191	371	34	1034	-	-	371
Nappanee	10	191	371	34	1034	4	704	120
North Judson	10	191	371	34	1034	4	704	120
North Liberty	10	191	371	34	1034	4	704	120
North Webster	-	-	-	-	-	4	704	120
Pierceton	-	-	-	-	-	4	704	120
Plymouth	10	191	371	34	1034	-	-	-
Porter County	-	26	371	34	1034	-	-	-
Rochester	10	191	371	34	1034	-	-	-
South Bend	10	191	371	34	1034	-	-	371
Syracuse	-	-	371	34	1034	4	704	120
Tippecanoe	-	-	-	-	-	4	704	120
Valparaiso	-	26	371	34	1034	-	-	-
Walkerton	-	-	371	34	1034	4	704	-
Wakarusa	10	191	371	34	1034	-	-	-
Warsaw	10	191	371	34	1034	-	-	-
Winamac	10	191	-	-	-	-	-	-
MICHIGAN								
Benton Harbor	10	191	371	34	1034	-	-	-
Berrien Springs	10	191	371	34	1034	-	-	-
Buchanan	10	191	371	34	1034	-	-	-
Cassopolis	10	191	371	34	1034	-	-	-
Constantine	10	191	371	34	1034	-	-	-
Dowagiac	10	191	371	34	1034	-	-	-
Edwardsburg	10	191	371	34	1034	-	-	-
New Buffalo	10	191	371	34	1034	-	-	-
Niles	10	191	371	34	1034	-	-	-
Sister Lakes	10	191	371	-	-	-	-	-
Stevensville	10	191	371	34	1034	-	-	-
St. Joseph (city)	10	191	371	34	1034	-	-	-
Three Rivers	11	-	-	-	-	-	-	-
White Pigeon	10	191	371	34	1034	-	-	-

## CHARTER CABLE IN STURGIS, MI HAS REASSIGNED ITS CHANNELS

### Original positions are: Base Tier

WNIT 34.1, #2. New assignment: #12.

WNIT 34.1, #781. New assignment: #785.

WNIT 34.1, #135. New assignment: #195.

After Charter's conversion to all-digital, station will continue to be available to ALL Charter customers served by the above lineups in a digital format on the basic tier of service.

### ROKU

WNIT is excited to announce the much-anticipated PBS and PBS KIDS channels are now available on Roku! The PBS channel features videos from popular PBS programs. Once you activate the PBS channel and choose WNIT as your local station, you can stream content from WNIT's local productions, as well as short, web-original videos from Webby Award-winning PBS Digital Studios. With the arrival of the PBS KIDS channel, junior streamers can enjoy full-length episodes and clips from great shows including *Curious George*, *Daniel Tiger's Neighborhood*, *Dinosaur Train*, *Super WHY!* and *The Cat in the Hat Knows a Lot About That!*

# Michiana Public Media wnit



Visit us at [wnit.org](http://wnit.org)

### MAILING ADDRESS

WNIT Center for Public Media  
PO Box 7034  
South Bend, IN 46634-7034

### STREET ADDRESS

300 West Jefferson Boulevard  
South Bend, IN 46601

**Phone:** (574) 675-9648

**Email:** [wnit@wnit.org](mailto:wnit@wnit.org)

©2024 Michiana Public Broadcasting Corporation  
Statement of Frequency: WNIT PUBLIC TELEVISION  
PLANNER (USPS 103-650 ISSN 1523-9373) is published  
bi-monthly by The Michiana Public Broadcasting  
Corporation, a non-profit corporation in the State of  
Indiana at 300 West Jefferson Boulevard, South Bend,  
IN 46601. Periodical postage paid at South Bend, IN and  
additional mailing offices. POSTMASTER: Send address  
changes to P.O. Box 7034, South Bend, IN 46634-7034.  
Editor: Jamal Henry. Designer: Ginger Santiago.

**UNITED STATES POSTAL SERVICE  
STATEMENT OF OWNERSHIP, MANAGEMENT AND CIRCULATION**

1. Publication Title: WNIT Planner
2. Publication Number: 103-650
3. Filing Date: August 26, 2024
4. Issue Frequency: bi-monthly
5. Number of Issues Published Annually: 6
6. Annual Subscription Price: \$ 60.00 (publication is included in annual membership fee)
7. Complete Mailing address of Known Office of Publication: 300 West Jefferson Boulevard, South Bend IN 46601
8. Complete Mailing Address of Headquarters or General Business Office of Publisher: 300 West Jefferson Boulevard, South Bend, IN 46601
9. Full Names and Complete Mailing address of Publisher, Editor, and Managing Editor:  
Publisher—Greg Giczi, Editor—Ginger Santiago, Managing Editor—Jamal Henry, all at 300 West Jefferson Boulevard, South Bend, IN 46601
10. Owner: Michiana Public Broadcasting Corporation (300 West Jefferson Blvd., South Bend, IN 46601)
11. Known Bondholders, Mortgagees, and Other Security Holders Owning Holding 1 percent or More of Total Amount of Bonds, Mortgages, or Other Securities:  
None Holders Owning Holding 1 percent or More of Total Amount of Bonds, Mortgages, or Other Securities: None
12. Tax Status: Has not changed during preceding 12 months
13. Publication Title: WNIT Planner
14. Issue Date for Circulation Data Below:
15. Extent and Nature of Circulation:

	<b>Average Number of Copies Each Issue During Preceding 12 Months</b>	<b>No. Copies of Single Issue Published Nearest to Filing Date</b>
a. Total Number of Copies	7270	7348
b. Paid and/or Requested Circulation		
(1) Paid/Requested Outside-County Mail Subscriptions	3920	3954
(2) Paid in-County Subscriptions	2530	2600
(3) Sales Through Dealers and Carriers, Street Vendors, Counter Sales and Other non-USPS Paid Distribution	95	94
(4) Other Classes Mailed	725	700
c. Total Paid and/or Requested Circulation (Sum of 15B (1), (2), (3) and (4))	7270	7348
d. Free Distribution by Mail		
(1) Outside County	0	0
(2) In-County	0	0
(3) Other Classes Mailed Through the USPS	0	0
(4) Free or Nominal Rate Distribution Outside the Mail	0	0
e. Total Free or Nominal Rate Distribution (Sum of 15D (1), (2), (3) and (4))	0	0
f. Total Distribution (Sum of 15C and 15E)	7270	7348
g. Copies Not Distributed	0	0
h. Total (Sum of 15F and 15G)	7270	7348
i. Percent Paid (15C divided by 15F x 100)	100%	100%

16. Publication of Statement of Ownership

This Statement of Ownership will be printed by the November - December 2024 issue of this publication.

17. Signature and Title of Editor, Publisher, Business Manager or Owner: Jamal Henry, Editor

I certify that all information furnished on this form is true and complete. I understand that anyone who furnishes false or misleading information on this form or who omits material or information requested on the form may be subject to criminal sanctions (including fines and imprisonment) and/or civil sanctions (including multiple damages and civil penalties)

# Worth Watching November



## PBS NEWS ELECTION COVERAGE

Tuesday, November 5 at 6pm

### FRONTLINE: THE CHOICE 2024 – HARRIS VS. TRUMP

Monday, November 4 at 9pm

Investigate the lives and characters of Kamala Harris and Donald Trump as they seek the presidency.

### PBS NEWS ELECTION COVERAGE

Tuesday, November 5 at 6pm

Live special coverage of the 2024 presidential and congressional elections co-anchored by Amna Nawaz and Geoff Bennett.

### SECRETS OF THE DEAD: LEONARDO, THE MAN WHO SAVED SCIENCE

Wednesday, November 6 at 10pm

Leonardo da Vinci is well known for his inventions as well as his art. But new evidence shows that many of his ideas were realized long before he sketched them out.

### POKAGON BAND OF POTAWATOMI: A SONG FOR EVERYTHING

Thursday, November 7 at 8pm

Explore how culture and language have survived through the pressures of colonialism, government oppression and modern-day life.

### THE EYES OF THE WORLD: FROM D-DAY TO VE DAY

Friday, November 8 at 10pm

The dramatic story of the final months of WWII on Europe is told through the eyes of Ernest Hemingway.

### LITTLE BIRD

Sundays at 11pm

(beginning November 10)

Follow an indigenous woman's journey as she reconnects with her past to find her birth family.

### INDEPENDENT LENS: MAKE PEACE OR DIE – HONOR THE FALLEN

Monday, November 11 at 10pm

After losing 17 men in his unit, Anthony Marquez dedicates himself to finding peace for himself and the families of the 1st Battalion, 5th Marines unit who served in Iraq.

### AMERICAN EXPERIENCE: AMERICAN COUP – WILMINGTON 1898

Tuesday, November 12 at 9pm

The race massacre and insurrection that occurred in Wilmington, N.C., in 1898 saw the murder of dozens of Black residents.

### NATURE:

#### LIONS OF THE SKELETON COAST

Wednesday, November 13 at 8pm

In the is astonishing story, lion researcher Dr. Philip Stander is witness to the most unprecedented lion behavior while following three orphaned Desert Lion cubs.

### THEN, NOW, AND ALWAYS...

#### THE ST. JOSEPH RIVER STORY

Thursday, November 14 at 8pm

WNIT tells the story of the St. Joseph River, including the people, history, and life along this storied river from Hillsdale to Lake Michigan.

### LEONARDO DA VINCI

Monday & Tuesday, November 18 & 19

at 8pm & 10pm

Explore the life and work of the 15th century polymath Leonardo da Vinci, Ken Burns's first non-American subject.

### POV: THE BODY POLITIC

Monday, November 25 at 10pm

With unfettered access, cameras follow Baltimore's new millennial mayor into office in the midst of a global pandemic and a national reckoning on policing.

### LIDIA CELEBRATES AMERICA: CHANGEMAKERS

Tuesday, November 26 at 9pm

Chef Lidia shares the inspiring stories of first, second and third-generation Americans shaping the shifting definition of what it means to be an American.

### FRONTLINE: CHINA, THE U.S. & THE RISE OF XI JINPING

Tuesday, November 26 at 10pm

Trace Xi Jinping's defining moments, how he's exercising his power and the impact on China and relations with the U.S.



**THANK YOU for the last 50 years!**



**Cheers to the *next* 50 years!**



Indiana State Teachers Association



# Classroom-ready materials. Free access.

Visit PBS LearningMedia to find thousands of resources for your classroom at no cost to you.



Discover **STANLEY CLARK**  
Schedule Your Campus Tour  
[www.stanleyclark.org](http://www.stanleyclark.org)

# SOUP NIGHT

Join us monthly from October–March to connect with your community and enjoy a **COMPLIMENTARY** bowl of soup at the Y!



**Benton Harbor–St. Joseph YMCA • First Tuesday of the month**  
3665 Hollywood Road, St. Joseph, MI 49085

**Downtown South Bend YMCA • Second Tuesday of the month**  
111 W. Jefferson Blvd. South Bend, IN 46601

**Niles–Buchanan YMCA • Second Wednesday of the month**  
905 N. Front St., Niles, MI 49120

**5:30–7:00 PM**

or until soup is gone.

**YMCA O’Brien Center • Third Tuesday of the month**  
321 E. Walter St., South Bend, IN 46614



	Monday	Tuesday	Wednesday	Thursday	Friday	Saturday	Sunday
6:00 AM	Arthur					Michigan Out of Doors	Mister Rogers
	Body Electric					Mister Rogers	Let's Learn
6:30 AM	Odd Squad					The Joy of Painting	Arthur
	Classical Stretch					Arthur	Let's Learn
7:00 AM	Wild Kratts					Quilting Arts	Molly of Denali
	Functional Fitness					Wild Kratts	Wimee's Words
7:30 AM	Alma's Way					Fons & Porter	Alma's Way
	Sit and Be Fit					Alma's Way	Albie's Elevator
8:00 AM	Lyla in the Loop					Sewing with Nancy	Cyberchase
	Wild Nevada	Active Living	This Old House	Yndi Yoga	Wai Lana Yoga	DIY Science Time	WordGirl
8:30 AM	Carl the Collector					Fit 2 Stitch	SciGirls
	Cycle Around Japan	Fit 2 Stitch	Ask This Old House	The Joy of Painting	Native Report	Wild Kratts	WordGirl
9:00 AM	Daniel Tiger's Neighborhood					It's Sew Easy	Outdoor Elements
	Amanpour & Company					Daniel Tiger	Daniel Tiger
9:30 AM	Rosie's Rules					No Passport Required	Experience Michiana
	Amanpour & Company					Reading League's Reading Buddies	Curious Crew
10:00 AM	Sesame Street					No Passport Required	Inside Indiana Business
	Democracy Now!					Sesame Street	Sesame Street
10:30 AM	Work It Out Wombats					Dinner & A Book	Journey Indiana
	Democracy Now!					Camp TV	Kid Stew
11:00 AM	Donkey Hodie					Milk Street TV	Off the Record
	Classical Stretch					Woodsongs Kids	Infinite Art Hunt
11:30 AM	Pinkalicious & Peterrific					America's Test Kitchen	Indiana Week in Review
	Happy Yoga					Youth Music of the World	Pinkalicious & Peterrific
12:00 PM	Elinor Wonders Why					Cook's Country	Washington Week
	Rick Steves' Europe					Coop Dreams	Into the Outdoors
12:30 PM	Nature Cat					New Scandinavian Cooking	Economic Outlook
	Samantha Brown's Places to Love					America's Heartland	Outdoor Elements
1:00 PM	Curious George					Homemade Live!	To the Contrary
	Journeys in Japan	This Old House	Make It Artsy	Jazzy Vegetarian	Song of the Mountains	Home Diagnosis	This American Land
1:30 PM	Xavier Riddle					Life of Loi!	Education Counts - Michiana
	Under the Radar	Ask This Old House	Outside: Beyond the Lens	Pati's Mexican Table	Song of the Mountains	This Old House	Destination Michigan
2:00 PM	Baking With Julia					This Old House	Politically Speaking
	Epic Trails	American Woodshop	The Joy of Painting	Dining With Chef	Lawrence Welk Show	This Old House	Energy Switch
2:30 PM	Ask This Old House					Ask This Old House	Overheard
	Weekends With Yankee	Woodsmith Shop	Paint This	Trails to Oishii Tokyo	Lawrence Welk Show	Ask This Old House	Wild Harvest
3:00 PM	Big Pacific / The Age of Nature / When Disaster Strikes / All Creatures Great and Small					Outside: Beyond the Lens	Various Programming
	Today's Wild West	Garden Smart	Paint This	Cook's Country	Woodsongs	Motorweek	Great American Recipe
3:30 PM	Big Pacific / The Age of Nature / When Disaster Strikes / All Creatures Great and Small					Places to Love	Various Programming
	Daytripper	Garden Smart	Painting & Travel	America's Test Kitchen	Woodsongs	Radical Restoration	Great American Recipe
4:00 PM	Antiques Roadshow	Finding Your Roots	Nature	NOVA	My Grandparents' War	NOVA	Various Programming
	Indiana Week in Review	Family Plot	Living West Michigan	Christina Cooks	Live from the Old Steeple	Key Ingredient	Nightmare Theatre
4:30 PM	Antiques Roadshow	Finding Your Roots	Nature	NOVA	My Grandparents' War	NOVA	Various Programming
	Inside Indiana Business	Life in Bloom	Journey Indiana	Ciao Italia	Live from the Old Steeple	My Greek Table	Nightmare Theatre
5:00 PM	Rick Steves' Europe					PBS Newshour Weekend	PBS News Weekend
	Politically Speaking	Asia Insight	Laura Flanders Show	Whitney Reynolds Show	Ndigo Studio	History Detectives	Nightmare Theatre
5:30 PM	BBC News America					Experience Michiana	Under the Radar
	DW the Day					History Detectives	Nightmare Theatre
6:00 PM	PBS Newshour					Classic Gospel	Antiques Roadshow
	BBC News the Context					PBS News Weekend	PBS News Weekend
6:30 PM	PBS Newshour					Classic Gospel	Antiques Roadshow
	NHK Newslines					Firing Line	Washington Week

(Programs subject to change. For the most up to date schedule, visit wnii.org.)

	7:00 PM	7:30 PM	8:00 PM	8:30 PM	9:00 PM	9:30 PM	10:00 PM	10:30 PM	11:00 PM	11:30 PM
1 FRI	Politically Speaking	American Black Journal	Washington Week	Firing Line	Great Performances: Land of Gold			Great Performances: San Francisco Symphony Reopening Night		
	PBS NewsHour		Experience Michiana	Refresh Request	Nightmare Theatre: Moon of the Wolf			Amanpour & Company		
2 SAT	Lawrence Welk Show: Time Was		As Time Goes By		Sanditon: Season 1, Ep. 4		The Wild Rose Moon Hour Show		Austin City Limits	
	Antiques Roadshow: Vintage Madison		Celebrity Antiques Road Trip		Ridley: Season 2, Ep. 1		Vienna Blood: Season 3, Ep. 2		Tell Me More	On Story
3 SUN	Luna & Sophie: Season 3, Ep. 5		Ridley: Season 2, Ep. 8		Marlow Murder Club: Season 1, Ep. 2		Wolf Hall: Season 1, Ep. 2		Lucy Worsley's Royal Myths and Secrets	
	Pokagon Band of Potawatomi: A Song for Everything		Native Horse		Chasing Voices		Recorded Live at Analog		Austin City Limits	
4 MON	Dinner & A Book	Rick Steves	Antiques Roadshow: Celebrating Native American Heritage		Frontline: The Choice 2024 - Harris vs. Trump			Frontline: The VP Choice		
	PBS NewsHour		Hometowns	Discover Road	Finding Your Roots: Far From Home		Young Vote		Amanpour & Company	
5 TUE	PBS News Election Coverage (6pm)									
	PBS NewsHour		Education Counts Michiana	Wealthtrack	History Detectives		After Action		Amanpour & Company	
6 WED	Education Counts Michiana	Outdoor Elements	Nature: San Diego - America's Wildest City		NOVA: Decoding the Universe - Quantum		Secrets of the Dead: Leonardo - The Man Who Saved Science		Life From Above: Patterned Planet	
	PBS NewsHour		Economic Outlook	Great Lakes Now	Battleground Everglades	Museum Access	Love After War		Amanpour & Company	
7 THUR	Experience Michiana	Under the Radar	Pokagon Band of Potawatomi: A Song for Everything		Dad's Secret War: France 1944		Peleliu: WWII's Most Well-Preserved Battlefield		Seebes on Iwo Jima	
	PBS NewsHour		Dinner & A Book	To Dine For	Wine First	Chef's Life	Valor and Memory		Amanpour & Company	
8 FRI	Politically Speaking	American Black Journal	Washington Week	Firing Line	Salute to Service 2024: A Veterans Day Celebration		The Eyes of the World from D-Day to VE Day			
	PBS NewsHour		Experience Michiana	Refresh Request	Nightmare Theatre: Manos			Amanpour & Company		
9 SAT	Lawrence Welk Show: Music of Harry Warren		As Time Goes By		Sanditon: Season 1, Ep. 5		Live from the Old Steeple		Austin City Limits	
	Antiques Roadshow: Celebrating Native American Heritage		Celebrity Antiques Road Trip		Ridley: Season 2, Ep. 2		Vienna Blood: Season 3, Ep. 3		Tell Me More	On Story
10 SUN	Luna & Sophie: Season 3, Ep. 6		Nolly: Episode 1		Marlow Murder Club: Season 1, Ep. 3		Wolf Hall: Season 1, Ep. 3		Little Bird: Season 1, Ep. 1	
	Rick Steves Iceland		Electric Indian		1st to Fight		Recorded Live at Analog		Austin City Limits	
11 MON	Dinner & A Book	Rick Steves	Antiques Roadshow: Extraordinary Finds 3		Antiques Roadshow: Somethings Wild		Independent Lens: Make Peace or Die - Honor the Fallen		Homecoming	
	PBS NewsHour		Hometowns	Discover Road	Finding Your Roots: Rising from the Ashes		Peleliu: WWII's Most Well-Preserved Battlefield		Amanpour & Company	
12 TUE	Economic Outlook	Curious Traveler	Finding Your Roots: Write My Name in the Book of Life		American Experience: American Coup - Wilmington 1898			The Electric Indian		
	PBS NewsHour		Education Counts Michiana	Wealthtrack	History Detectives		After Action		Amanpour & Company	
13 WED	Education Counts Michiana	Outdoor Elements	Nature: Lions of the Skeleton Coast		NOVA: Building Stuff - Boost It!		Secrets of the Dead: Lost Treasures of Angkor, Pt. 1		Life From Above: Changing Planet	
	PBS NewsHour		Economic Outlook	Great Lakes Now	Battleground Everglades	Museum Access	Her War, Her Story		Amanpour & Company	
14 THUR	Experience Michiana	Under the Radar	Then, Now and Always: The St. Joseph River Story		Native America: New Worlds		Native America: Warrior Spirit		First Peoples: Australia	
	PBS NewsHour		Dinner & A Book	To Dine For	Wine First	Chef's Life	Dad's Secret War		Amanpour & Company	
15 FRI	Politically Speaking	American Black Journal	Washington Week	Firing Line	Great Performances: Rodgers & Hammerstein's 80th Anniversary			Celebrity Antiques Road Trip		
	PBS NewsHour		Experience Michiana	Refresh Request	Nightmare Theatre: Night of the Blood			Amanpour & Company		
16 SAT	Lawrence Welk Show: Strike Up the Band		As Time Goes By		Sanditon: Season 1, Ep. 6		Live from the Old Steeple		Austin City Limits	
	Antiques Roadshow: Extraordinary Finds 3		Celebrity Antiques Road Trip		Ridley: Season 2, Ep. 3		Vienna Blood: Season 3, Ep. 4		Tell Me More	On Story



(Programs subject to change. For the most up to date schedule, visit wnit.org.)

	7:00 PM	7:30 PM	8:00 PM	8:30 PM	9:00 PM	9:30 PM	10:00 PM	10:30 PM	11:00 PM	11:30 PM
17 SUN	Luna & Sophie: Season 3, Ep. 7		Nolly: Episode 2		Marlow Murder Club: Season 1, Ep. 4		Wolf Hall: Season 1, Ep. 4		Little Bird: Season 1, Ep. 2	
	Oyate Woyaka		And Knowledge to Keep Us		Covenant of the Salmon People		Recorded Live at Analog		Austin City Limits	
18 MON	Dinner & A Book	Rick Steves	Leonardo Da Vinci: The Disciple of Experience, Pt. 1				Leonardo Da Vinci: The Disciple of Experience, Pt. 1			
	PBS NewsHour		Hometowns	Discover Road	Finding Your Roots: Family - Lost and Found		Reciprocity Project		Amanpour & Company	
19 TUE	Economic Outlook	Curious Traveler	Leonardo da Vinci: Painter-God, Pt. 2				Leonardo Da Vinci: Painter-God, Pt. 2			
	PBS NewsHour		Education Counts Michiana	Wealthtrack	History Detectives		After Action		Amanpour & Company	
20 WED	Education Counts Michiana	Outdoor Elements	Nature: Attenborough's Life Journey		NOVA: Building Stuff - Reach It!		Secrets of the Dead: Lost Treasures of Angkor, Pt. 2		Changing Seas	
	PBS NewsHour		Economic Outlook	Great Lakes Now	Return: Native American Women	Museum Access	Alzheimer's: What You Can Do		Amanpour & Company	
21 THUR	Experience Michiana	Under the Radar	Arts @ IUSB: IU-South Bend Piano Series		Native America: Women Rule		Native America: Language is Life		First Peoples: Europe	
	PBS NewsHour		Dinner & A Book	To Dine For	Wine First	Chef's Life	Inside the Warren Commission		Amanpour & Company	
22 FRI	Politically Speaking	American Black Journal	Washington Week	Firing Line	Great Performances: Patsy Cline - Walkin' After Midnight				Celebrity Antiques Road Trip	
	PBS NewsHour		Experience Michiana	Refresh Request	Nightmare Theatre: Warriors of the Wasteland				Amanpour & Company	
23 SAT	Lawrence Welk Show: Thanksgiving		As Time Goes By		Sanditon: Season 1, Ep. 7		Live from the Old Steeple		ACL Presents 23rd Annual American Honors	
	Antiques Roadshow: Junk in the Trunk		Celebrity Antiques Road Trip		Ridley: Season 2, Ep. 4		Vienna Blood: Season 3, Ep. 5		Tell Me More	On Story
24 SUN	Luna & Sophie: Season 3, Ep. 8		Nolly: Episode 3		Inside the Court of Henry VIII		Wolf Hall: Season 1, Ep. 5		Little Bird: Season 1, Ep. 3	
	Arts @ IUSB: IU South Bend Piano Series		Fighting Indians				Recorded Live at Analog		ACL Presents 23rd Annual American Honors	
25 MON	Dinner & A Book	Rick Steves	Antiques Roadshow: Out of This World		Antiques Roadshow: The Gen X Years		POV: The Body Politic		Swing Lo'	
	PBS NewsHour		Hometowns	Discover Road	Finding Your Roots: Chosen		Older Than the Crown		Amanpour & Company	
26 TUE	Economic Outlook	Curious Traveler	Finding Your Roots: Country Roots		Lidia Celebrates America: Changemakers		Frontline: China, The U.S. & The Rise of Xi Jinping			
	PBS NewsHour		Education Counts Michiana	Wealthtrack	History Detectives		After Action		Amanpour & Company	
27 WED	Education Counts Michiana	Outdoor Elements	Nature: Woodpeckers - The Hole Story		NOVA: Building Stuff - Change It!		Secrets of the Dead: Jamestown's Dark Winter		Changing Seas	
	PBS NewsHour		Economic Outlook	Great Lakes Now	Two Wars	Museum Access	North Korea		Amanpour & Company	
28 THUR	Experience Michiana	Under the Radar	Benjamin Franklin: Join or Die, Pt. 1				Benjamin Franklin: An American, Pt. 2			
	PBS NewsHour		Dinner & A Book	To Dine For	Folk Americana Roots Hall		Wine, Women & Dementia		Amanpour & Company	
29 FRI	Politically Speaking	American Black Journal	Washington Week	Firing Line	Great Performances: Henry Mancini - 100 at the Hollywood Bowl				Eudora's Fable: The Shoe Bird	
	PBS NewsHour		Experience Michiana	Refresh Request	Nightmare Theatre: Nosferatu				Amanpour & Company	
30 SAT	All New 60s and 70s Soul Celebration						Leonard Cohen: Live in Dublin			
	Antiques Roadshow: Out of This World		Celebrity Antiques Road Trip		Ridley: Season 2, Ep. 5		Vienna Blood: Season 3, Ep. 6		Tell Me More	On Story

(Programs subject to change. For the most up to date schedule, visit [wnit.org](http://wnit.org).)

## FRIDAY 1

Midnight Amanpour & Co.  
1:00 am Velvet  
2:30 am This Old House  
3:00 am Secrets of Dead  
4:00 am Nature: Dracula  
5:00 am NOVA: Solar System

## SATURDAY 2

Midnight Amanpour & Co.  
1:00 am Great Performances  
2:30 am American Anthems  
3:00 am Wild Scandinavia  
4:00 am Wild Scandinavia  
5:00 am Wild Scandinavia

## SUNDAY 3

Midnight Caverns Sessions  
12:30 am Songs at Center  
1:00 am Nature: Dracula  
2:00 am Nature: Dracula  
3:00 am Celebrity Antiques Road Trip  
4:00 am Secrets of Dead  
5:00 am My Grandparents' War

## MONDAY 4

Midnight Miss Friman's War  
1:00 am Marlow Murder Club  
2:00 am Wolf Hall  
3:00 am American Anthems  
3:30 am Great Performances  
5:00 am Finding Your Roots

## TUESDAY 5

Midnight Amanpour & Co.  
1:00 am Frontline  
3:00 am Ridley  
4:00 am Marlow Murder Club  
5:00 am Celebrity Antiques Road Trip

## WEDNESDAY 6

Midnight PBS News Election Coverage  
2:00 am Himalaya  
3:00 am Frontline: The Choice  
5:00 am Antiques Roadshow

## THURSDAY 7

Midnight Amanpour & Co.  
1:00 am NOVA: Universe  
2:00 am Secrets of Dead  
3:00 am Big Pacific  
4:00 am Big Pacific  
5:00 am Big Pacific

## FRIDAY 8

Midnight Amanpour & Co.  
1:00 am Velvet  
2:30 am This Old House  
3:00 am Secrets of Dead  
4:00 am Nature: San Diego  
5:00 am NOVA: Universe

## SATURDAY 9

Midnight Amanpour & Co.  
1:00 am Salute to Service  
2:00 am Craft in America  
3:00 am Craft in America  
4:00 am Big Pacific  
5:00 am Antiques Roadshow

## SUNDAY 10

Midnight Caverns Sessions  
12:30 am Songs at Center  
1:00 am Nature: San Diego  
2:00 am Secrets of Dead  
3:00 am Velvet  
4:30 am Baking with Julia  
5:00 am Salute to Service

## MONDAY 11

Midnight Little Bird  
1:00 am Marlow Murder Club  
2:00 am Wolf Hall  
3:00 am Big Pacific  
4:00 am My Grandparents' War  
5:00 am My Grandparents' War

## TUESDAY 12

Midnight Amanpour & Co.  
1:00 am Samantha Brown  
1:30 am Antiques Roadshow  
2:30 am Baking with Julia  
3:00 am Howards End  
4:00 am Marlow Murder Club  
5:00 am Celebrity Antiques Road Trip

## WEDNESDAY 13

Midnight Amanpour & Co.  
1:00 am American Experience  
3:00 am Independent Lens  
4:00 am Baking with Julia  
5:00 am Antiques Roadshow

## THURSDAY 14

Midnight Amanpour & Co.  
1:00 am NOVA: Building Stuff  
2:00 am Secrets of Dead  
3:00 am American Experience  
5:00 am Finding Your Roots

## FRIDAY 15

Midnight Amanpour & Co.  
1:00 am Velvet  
2:30 am This Old House  
3:00 am Secrets of Dead  
4:00 am Nature: Lions  
5:00 am NOVA: Building Stuff

## SATURDAY 16

Midnight Amanpour & Co.  
1:00 am Great Performances  
3:00 am Age of Nature  
4:00 am Age of Nature  
5:00 am Age of Nature

## SUNDAY 17

Midnight Caverns Sessions  
12:30 am Songs at Center  
1:00 am Nature: Lions  
2:00 am Secrets of Dead  
3:00 am Velvet  
4:30 am Independent Lens

## MONDAY 18

Midnight Little Bird  
1:00 am Marlow Murder Club  
2:00 am Wolf Hall  
3:00 am Great Performances  
5:00 am Finding Your Roots

## TUESDAY 19

Midnight Amanpour & Co.  
1:00 am Leonardo Da Vinci  
3:00 am Howards End  
4:00 am Marlow Murder Club  
5:00 am Celebrity Antiques Road Trip

## WEDNESDAY 20

Midnight Amanpour & Co.  
1:00 am Leonardo Da Vinci  
3:00 am Leonardo Da Vinci  
5:00 am Antiques Roadshow

## THURSDAY 21

Midnight Amanpour & Co.  
1:00 am NOVA: Building Stuff  
2:00 am Secrets of Dead  
3:00 am When Disaster Strikes  
4:00 am When Disaster Strikes  
5:00 am When Disaster Strikes

## FRIDAY 22

Midnight Amanpour & Co.  
1:00 am Velvet  
2:30 am This Old House  
3:00 am Secrets of Dead  
4:00 am Nature: Attenborough  
5:00 am NOVA: Building Stuff

## SATURDAY 23

Midnight Amanpour & Co.  
1:00 am Great Performances  
2:30 am American Anthems  
3:00 am Icon  
4:00 am Icon  
5:00 am My Grandparents' War

## SUNDAY 24

Midnight Caverns Sessions  
12:30 am Songs at Center  
1:00 am Nature: Attenborough  
2:00 am Secrets of Dead  
3:00 am Velvet  
4:00 am American Anthems  
5:00 am My Grandparents' War

## MONDAY 25

Midnight Little Bird  
1:00 am Marlow Murder Club  
2:00 am Wolf Hall  
3:00 am American Anthems  
3:30 am Great Performances  
5:00 am Celebrity Antiques Road Trip

## TUESDAY 26

Midnight Amanpour & Co.  
1:00 am Samantha Brown  
1:30 am All Creatures Great & Small  
2:30 am All Creatures Great & Small  
3:30 am All Creatures Great & Small  
4:30 am All Creatures Great & Small  
5:30 am Baking with Julia

## WEDNESDAY 27

Midnight Amanpour & Co.  
1:00 am All Creatures Great & Small  
2:00 am All Creatures Great & Small  
3:30 am All Creatures Great & Small  
4:30 am All Creatures Great & Small  
5:30 am Baking with Julia

## THURSDAY 28

Midnight Amanpour & Co.  
1:00 am All Creatures Great & Small  
2:00 am All Creatures Great & Small  
3:00 am All Creatures Great & Small  
4:00 am All Creatures Great & Small  
5:00 am Finding Your Roots

## FRIDAY 29

Midnight Amanpour & Co.  
1:00 am Samantha Brown  
1:30 am Lidia Celebrates America  
2:30 am Baking with Julia  
3:00 am Secrets of Dead  
4:00 am Nature: Woodpeckers  
5:00 am NOVA: Building Stuff

## SATURDAY 30

Midnight Amanpour & Co.  
1:00 am Great Performances  
3:00 am Craft in America  
4:00 am Lucy Worsley  
5:00 am Antiques Roadshow

(Programs subject to change. For the most up to date schedule, visit [wnit.org](http://wnit.org).)

## FRIDAY 1

Midnight Velvet  
1:30 am This Old House  
2:00 am Amanpour & Co.  
3:00 am This Old House  
3:30 am Ask This Old House  
4:00 am Velvet  
5:30 am This Old House

## SATURDAY 2

Midnight Great Performances  
1:30 am American Anthems  
2:00 am Amanpour & Co.  
3:00 am Washington Week  
3:30 am Firing Line  
4:00 am Great Performances  
5:30 am American Anthems

## SUNDAY 3

Midnight NOVA: Solar System  
1:00 am Nature: Dracula  
3:00 am Celebrity Antiques Road Trip  
4:00 am Secrets of Dead  
5:00 am My Grandparents' War

## MONDAY 4

Midnight Marlow Murder Club  
1:00 am Lucy Worsley  
2:00 am Austin City Limits  
3:00 am Ridley  
4:00 am Marlow Murder Club  
5:00 am Lucy Worsley

## TUESDAY 5

Midnight Frontline  
2:00 am Amanpour & Co.  
3:00 am Antiques Roadshow  
4:00 am Frontline

## WEDNESDAY 6

Midnight Eyes of the World  
2:00 am Big Pacific  
3:00 am Big Pacific  
4:00 am Celebrity Antiques Road Trip  
5:00 am Himalaya

## THURSDAY 7

Midnight NOVA: Universe  
1:00 am Secrets of Dead  
2:00 am Amanpour & Co.  
3:00 am Nature: San Diego  
4:00 am NOVA: Universe  
5:00 am Secrets of Dead

## FRIDAY 8

Midnight Velvet  
1:30 am This Old House  
2:00 am Amanpour & Co.  
3:00 am This Old House  
3:30 am Ask This Old House  
4:00 am Velvet  
5:30 am This Old House

## SATURDAY 9

Midnight Salute to Service  
1:00 am Salute to Service  
2:00 am Amanpour & Co.  
3:00 am Washington Week  
3:30 am Firing Line  
4:00 am Salute to Service  
5:00 am Craft in America

## SUNDAY 10

Midnight Nightmare Theatre  
2:00 am Austin City Limits  
3:00 am NOVA: Universe  
4:00 am Nature: San Diego  
5:00 am Secrets of Dead

## MONDAY 11

Midnight Marlow Murder Club  
1:00 am Lucy Worsley  
2:00 am Austin City Limits  
3:00 am Howards End  
4:00 am Marlow Murder Club  
5:00 am Lucy Worsley

## TUESDAY 12

Midnight Antiques Roadshow  
1:00 am Independent Lens  
2:30 am Amanpour & Co.  
3:30 am Antiques Roadshow  
4:30 am Antiques Roadshow  
5:30 am Baking with Julia

## WEDNESDAY 13

Midnight American Experience  
2:00 am Amanpour & Co.  
3:00 am Finding Your Roots  
4:00 am American Experience

## THURSDAY 14

Midnight NOVA: Building Stuff  
1:00 am Secrets of Dead  
2:00 am Amanpour & Co.  
3:00 am Nature: Lions  
4:00 am NOVA: Building Stuff  
5:00 am Secrets of Dead

## FRIDAY 15

Midnight Velvet  
1:30 am This Old House  
2:00 am Amanpour & Co.  
3:00 am This Old House  
3:30 am Ask This Old House  
4:00 am Velvet  
5:30 am This Old House

## SATURDAY 16

Midnight Nightmare Theatre  
2:00 am Austin City Limits  
3:00 am NOVA: Universe  
4:00 am Nature: San Diego  
5:00 am Secrets of Dead

## SUNDAY 17

Midnight Nightmare Theatre  
2:00 am Austin City Limits  
3:00 am NOVA: Volcano  
4:00 am Nature: Sinkholes  
5:00 am Nature: Equus

## MONDAY 18

Midnight Marlow Murder Club  
1:00 am Lucy Worsley  
2:00 am Austin City Limits  
3:00 am Howards End  
4:00 am Marlow Murder Club  
5:00 am Lucy Worsley

## TUESDAY 19

Midnight Cowboy & Preacher  
1:00 am Leonardo Da Vinci  
3:00 am Amanpour & Co.  
4:00 am Leonardo Da Vinci

## WEDNESDAY 20

Midnight Living Land  
1:00 am Leonardo Da Vinci  
3:00 am Amanpour & Co.  
4:00 am Leonardo Da Vinci

## THURSDAY 21

Midnight NOVA: Building Stuff  
1:00 am Secrets of Dead  
2:00 am Amanpour & Co.  
3:00 am Nature: Attenborough  
4:00 am NOVA: Building Stuff  
5:00 am Secrets of Dead

## FRIDAY 22

Midnight Velvet  
1:30 am This Old House  
2:00 am Amanpour & Co.  
3:00 am This Old House  
3:30 am Ask This Old House  
4:00 am Velvet  
5:30 am This Old House

## SATURDAY 23

Midnight Great Performances  
1:30 am American Anthems  
2:00 am Amanpour & Co.  
3:00 am Washington Week  
3:30 am Firing Line  
4:00 am Great Performances  
5:30 am American Anthems

## SUNDAY 24

Midnight Nightmare Theatre  
2:00 am ACL Presents  
3:00 am NOVA: Building Stuff  
4:00 am Nature: Attenborough  
5:00 am Secrets of Dead

## MONDAY 25

Midnight Howards End  
1:00 am Lucy Worsley  
2:00 am ACL Presents  
3:00 am Howards End  
4:00 am Howards End  
5:00 am Lucy Worsley

## TUESDAY 26

Midnight Antiques Roadshow  
1:00 am POV  
2:30 am Amanpour & Co.  
3:30 am All Creatures Great & Small  
4:30 am All Creatures Great & Small  
5:30 am Samantha Brown

## WEDNESDAY 27

Midnight Lidia Celebrates America  
1:00 am Frontline  
2:00 am Amanpour & Co.  
3:00 am All Creatures Great & Small  
4:00 am All Creatures Great & Small  
5:30 am Samantha Brown

## THURSDAY 28

Midnight NOVA: Building Stuff  
1:00 am Secrets of Dead  
2:00 am Amanpour & Co.  
3:00 am All Creatures Great & Small  
4:00 am All Creatures Great & Small  
5:00 am All Creatures Great & Small

## FRIDAY 29

Midnight All Creatures Great & Small  
1:00 am All Creatures Great & Small  
2:00 am Amanpour & Co.  
3:00 am POV  
4:30 am Lidia Celebrates America  
5:30 am Baking with Julia

## SATURDAY 30

Midnight Great Performances  
2:00 am Amanpour & Co.  
3:00 am Washington Week  
3:30 am Firing Line  
4:00 am Great Performances

# WAYS TO WATCH



Did you know that you can now watch PBS Michiana - WNIT in more ways than ever? We have added live streaming options and other services to better enable you to watch what you want from WNIT, when you want to and where you want to.



**34.1 - Over the Air**  
Comcast - 10, 191, 1035  
26 in LaPorte and Valparaiso  
Dish - 34 or 1034  
DirecTV - 34 or 1034  
AT&T U-verse - 34 or 1034  
Mediacom - 704



**DAYTIME**  
M-F & SUN



**34.2 - Over the Air**  
Comcast - 371  
Mediacom - 120



**DAYTIME**  
SAT & SUN



#### LIVE ON OUR WEBSITE

Go to [wnit.org](http://wnit.org) and press the PBS Michiana streaming button on the left for a live feed.



#### ON DEMAND ON OUR WEBSITE

Local and National  
[video.wnit.org](http://video.wnit.org)



#### LOCAL PRODUCTIONS ON OUR WEBSITE

Go to [wnit.org](http://wnit.org) and hover over programs on the left.



#### PBS VIDEO APP

Stream 4000+ PBS/PBS Michiana - WNIT local shows on demand.



#### PBS MICHIANA PASSPORT

Extended access to 1,500+ episodes. PBS Michiana Passport is an added benefit of station membership. Go to [wnit.org](http://wnit.org) and press the Passport button on the left.



YouTube TV  
Hulu + Live  
Local Now App



**34.3 - Over the Air**  
Comcast - 1159  
Mediacom - 694  
Charter - 196  
Quality Cablevision - 34.3  
Sister Lakes Cable TV - 34.3  
Acme Communications - 36  
Winamac CATV - 34  
Pulaski IPTV - 36  
RTC1 - 9  
DirecTV - 288



24/7



Or livestream at: [wnit.org/pbskids247](http://wnit.org/pbskids247)



**34.4 - Over the Air**



**34.5 - Over the Air**  
Comcast - 1160



Or livestream at:  
[michiganlearning.org](http://michiganlearning.org)



Check out our website

**WNIT.ORG**

where you can:

- easily donate to PBS Michiana - WNIT
- sign up for membership
- watch PBS videos on demand
- find PBS curriculum-based shows and matching activities
- make a free will
- preview PBS programs
- get PBS Michiana - WNIT Passport
- access PBS Kids 24/7 games
- sign up for WNIT Kids Club
- see the most up-to-date schedules

**and more!**

PBS Michiana  Passport

**INSTANT. ANYTIME.  
ANYWHERE.**

With access to tens of thousands of hours of your favorite programs, PBS Michiana Passport allows you to watch even more episodes of your favorites including full seasons of many current and past series.

Contribute a tax-deductible gift of \$5 per month or an annual gift of \$60 or more. Your donation will help PBS Michiana serve your community through media that educates, inspires, and entertains.

Learn more at [wnit.org](http://wnit.org).

Select the Passport button on the left.

Downloads and Full Help Articles at:

[PBS.ORG/PBS-APP](http://PBS.ORG/PBS-APP)



SHEIN TRUST COMMUNITY SERIES

*The Shoe Bird*

Sunday, December 1 / 2:30 p.m.  
featuring the Notre Dame Children's Choir.

SHEIN TRUST COMMUNITY SERIES

*Día de los Muertos*

Saturday, November 2 / 3:00 p.m.

SHEIN TRUST COMMUNITY SERIES

*Young People's  
Discovery Concert*

November 7 / Noon / Free  
Carolyn Watson, Guest Conductor

*Home for the Holidays*

Saturday, December 14  
2 p.m. & 7:30 p.m.  
One-day only with Music Director Alastair Willis  
conducting. Featuring Uzimal and Soprano  
Anne Slovin.

Save  
your  
seats!



**SOUTH BEND  
SYMPHONY  
ORCHESTRA**

Alastair Willis, Music Director

[www.southbendsymphony.org](http://www.southbendsymphony.org)



574-232-6343



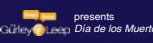
proudly supports  
the Shein Trust  
Community Series.



presents Home  
for the Holidays.



is the proud Artistic  
Partner of the  
2024-25 Season.



presents  
Dia de los Muertos.

Dates, programs, and venues  
are subject to change.

# Worth Watching December



## ALL CREATURES GREAT AND SMALL: SEASON 4

Sunday, December 15 at 9pm

### WHITNEY HOUSTON: THE CONCERT FOR A NEW SOUTH AFRICA

Sunday, December 1 at 6:30pm

In 1994, Whitney Houston took the stage for a series of three concerts in South Africa, to honor President Nelson Mandela's historic election win.

### ALL CREATURES GREAT AND SMALL: TRICKI & FRIENDS

Sunday, December 1 at 8:30pm

Celebrate the animals in the series by revisiting favorite scenes and going behind the scenes to learn more about the creatures that viewers love.

### MEXICO MADE WITH LOVE

Monday, December 2 at 8pm

Take a look inside the workshops and studios of the country's most remarkable artisans.

### HENRY LOUIS GATES, JR.: THE FABRIC OF AMERICA

Tuesday, December 3 at 8pm

This new retrospective program explores his scholarly works over the past five years and the historic events and national cultural reckoning on racial injustice.

### IL VOLO IN THE VALLEY OF THE TEMPLES

Thursday, December 5 at 8pm

Internationally acclaimed Italian trio Il Volo performs against the breathtaking backdrop of the ancient Temple of Concordia in Sicily.

### THE WHO AT KILBURN

Saturday, December 7 at 9:30pm

This rare film captures the classic line-up of The Who in what was to be their final public show.

### SHERLOCK ON MASTERPIECE: THE ABOMINABLE BRIDE

Sunday, December 8 at 6pm

Dr. John Watson and Sherlock Holmes arrive in 1895, where they face an enemy who appears to be from beyond the grave.

### SEASON OF LIGHT: CHRISTMAS WITH THE TABERNACLE CHOIR

Thursday, December 12 at 8pm

Tony Award-winner Lea Salonga and renowned actor Sir David Suchet shine in this holiday special.

### HOLIDAYS AT MURRAY STATE 2024

Thursday, December 12 at 11pm

Murray State University brings you sounds of the season from choral, jazz and wind ensembles.

### ALL CREATURES GREAT AND SMALL: SEASON 4

Sunday, December 15 at 9pm

It's Spring 1940 and with Europe at war, the community in Darrowby are pulling together more than ever before.

### JOY: CHRISTMAS WITH THE TABERNACLE CHOIR

Tuesday, December 17 at 8pm

This holiday special combines Christmas classics with the story of Victor Hugo to convey the message that opening one's heart to all is the true meaning of the season.

### TOO HOT TO HANDEL – THE GOSPEL MESSIAH

Tuesday, December 17 at 9:30pm &

Tuesday, December 24 at 9pm

Capture the essential core of Handel's famous piece that reinterprets it with chords of R&B, jazz and gospel.

### THE CHRISTMAS LECTURE

Wednesday, December 18 at 10pm &

Monday, December 23 at 9pm

This lecture aims to inspire audiences from age 5 to 105 with the curiosity and wonder of scientific inquiry.



**VIBRANT LIGHT: STAINED GLASS OF THE BASILICA AT NOTRE DAME**

**Thursday, December 19 at 8:30pm & Tuesday, December 24 at 9:30pm**

This story explores the significance of stained glass through religion, cultural impact, art, design, history and craftsmanship.

**2023 ANDREWS UNIVERSITY CHRISTMAS PROGRAM**

**Friday, December 20 at 9pm**

“Christmas at Andrews” features the Andrews University Wind Symphony, University Singers, Chorale, and so much more.

**CALL THE MIDWIFE HOLIDAY SPECIAL 2024**

**Wednesday, December 25 at 8pm & 9pm**

Set during Christmas 1969, this is the last time that the show will be set during the sixties as its forthcoming 14th season will bring the story into the seventies.

**POV: WHO I AM NOT**

**Monday, December 30 at 10pm**

A South African beauty queen faces an identity crisis after discovering she’s intersex.

The graphic features the PBS KIDS logo and the text "Watch With ASL" in a yellow banner. Below this is a video player interface showing a scene with a woman and a child. To the right of the video player is a vertical stack of icons for "Live TV", "ASL", and other content. Below the video player is a cartoon character of a boy with large eyes and a blue shirt, waving. To the right of the character is the text "Watch your favorite PBS KIDS shows with an ASL interpreter." Below the character and text are a QR code and the PBS KIDS logo. At the bottom, there is a small disclaimer: "PBS KIDS and the PBS KIDS Logo are trademarks owned by Public Broadcasting Service. Used with permission. READY SET GO! © 2024 Jet Propulsion, LLC. Ready Set Go! and the Ready Set Go! logo are registered trademarks of Jet Propulsion, LLC. SUPER HERO COMIC BOOK ADVENTURES © 2024 Story Media Group Inc. "Super Hero's Comic Book Adventures" and logo are trademarks of Story Media Group. All Rights Reserved. DARING GEORGE © 2024 Universal Studios and/or TM. All rights reserved. UNICOR WONDERS WFFF is produced by SHOE Inc. LLC for PBS. ©2024 SHOE INC. LLC. All Rights Reserved."

**JOY:  
CHRISTMAS WITH THE  
TABERNACLE CHOIR**  
Tuesday, December 17 at 8pm



# Membership Corner

“

I love all your content, thanks for everything you do!  
- Anna (Union Pier, MI)

”

## CONCERT UPDATES

WNIT Box Office - Tickets are available by calling 574-675-9648 x311 or going to [www.wnit.org/boxoffice](http://www.wnit.org/boxoffice).



**Mannheim Steamroller Christmas**  
**Friday, December 20 at 8pm**

**Blue Gate Performing Arts Center, Shpeshewana, Indiana**

The holiday tradition continues! *Mannheim Steamroller Christmas* by Chip Davis has been America's favorite holiday tradition for more than 35 years! Grammy Award winner Chip Davis has created a show that features Mannheim Steamroller Christmas classics in the distinctive Mannheim sound. The program includes 15 musicians playing more than 20 instruments against a backdrop of dazzling multimedia effects - capturing the spirit of the season in an immersive yet intimate setting. Regular ticket packages available now at [wnit.org/boxoffice](http://wnit.org/boxoffice) or 574-675-9648 x311.

## Drama, Music, Cooking & Art – Everything You Love about PBS Coming in the Winter Membership Campaign!

WNIT's Winter Membership Campaign starts on Friday, November 29th and runs through Sunday, December 8th. Like everyone else, public television is continually challenged by rising programming costs, and while the commercial stations receive money from cable and satellite providers, PBS stations do not. And did you know it takes about \$10,000 a day to run WNIT! That's why WNIT needs your financial support. It takes all of us to do our part and keep this programming on the air.

While these drives represent around 2% of our annual broadcast hours, they do provide WNIT with the majority of revenue required to purchase and produce the regular and local programming enjoyed by everyone throughout northern Indiana and southwestern Michigan. There are new programs from *Great Performances*, *America's Test Kitchen*, *Henry Louis Gates, Jr.*, *All Creatures Great and Small*, *Whitney Houston*, *The Who*, *60s and 70s Soul* and so much more.

Remember to share with family and friends the importance of donating to PBS Michiana – WNIT.

Thank you!

## End of Year Tax Planning & Donations

For fifty years, you have turned to WNIT for news and information you trust. With help from caring viewer-donors like you, WNIT can maintain our role as the most trustworthy source for news, the go-to station for the arts and entertainment, and the only source of curriculum-based educational children's programming. It is our mission and we stay true to that mission at all times.

As we close out 2024, we ask for your help to maintain that mission by making an additional investment in the future of WNIT. As a community-owned station, WNIT is an expression of your interests, your curiosity, and your support. Visit [wnit.org/give](http://wnit.org/give) to make your tax-deductible cash contribution before December 31st. You can also make gifts of vehicles or appreciated stock. Tax receipts for all donations in 2024 will be mailed in January 2025.

Qualified individuals can also make a charitable gift from an IRA through December 31st. This provision allows taxpayers who are age 70 ½ or older to give up to \$100,000 from their IRA to qualifying charities without having to pay income tax on the withdrawn amount. Individuals interested in this type of contribution should consult their tax or financial advisors for more information.

At this special time of year, all of us at WNIT extend our best wishes to you and your family for a safe and joyous holiday season and a very happy new year. We look forward to serving you in 2025 and remain dedicated to bringing you the best that public television has to offer now and into the future.



## Let's Go Green!

In our ongoing efforts to reduce our environmental impact and minimize costs associated with printing and mailing our bimonthly program guide, *The Planner*, WNIT will begin offering a digital version starting with the January/February 2025 edition for those who prefer it.

Your preferences matter to us! We want to ensure you receive *The Planner* in the format that works best for you.

To support our initiative, please let us know if you'd like to receive *The Planner* via email with a link to a digital copy, or if you prefer to continue receiving a printed version by mail. Simply email [Laura at laurains@wnit.org](mailto:laura@wnit.org) or call 574-675-9648 ext. 311.

	Monday	Tuesday	Wednesday	Thursday	Friday	Saturday	Sunday
6:00 AM	Arthur					Michigan Out of Doors	Mister Rogers
	Body Electric					Mister Rogers	Let's Learn
6:30 AM	Odd Squad					The Joy of Painting	Arthur
	Classical Stretch					Arthur	Let's Learn
7:00 AM	Wild Kratts					Quilting Arts	Wild Kratts
	Functional Fitness					Wild Kratts	Wimee's Words
7:30 AM	Alma's Way					Fons & Porter	Alma's Way
	Sit and Be Fit					Alma's Way	Albie's Elevator
8:00 AM	Lyla in the Loop					Best of Sewing with Nancy	Cyberchase
	Wild Nevada	Active Living	This Old House	Yndi Yoga	Wai Lana Yoga	DIY Science Time	WordGirl
8:30 AM	Carl the Collector					Fit 2 Stitch	SciGirls
	Cycle Around Japan	Fit 2 Stitch	Ask This Old House	The Joy of Painting	Native Report	Carl the Collector	WordGirl
9:00 AM	Daniel Tiger's Neighborhood					It's Sew Easy	Outdoor Elements
	Amanpour & Company					Daniel Tiger	Daniel Tiger
9:30 AM	Rosie's Rules					Curious Traveler	Experience Michiana
	Amanpour & Company					Reading League's Reading Buddies	Curious Crew
10:00 AM	Sesame Street					Family Travel	Inside Indiana Business
	Democracy Now!					Sesame Street	Sesame Street
10:30 AM	Work It Out Wombats					Dinner & A Book	Journey Indiana
	Democracy Now!					Camp TV	Kid Stew
11:00 AM	Donkey Hodie					Milk Street TV	Off the Record
	Classical Stretch					Woodsongs Kids	Infinite Art Hunt
11:30 AM	Pinkalicious & Peterrific					America's Test Kitchen	Indiana Week in Review
	Happy Yoga					Youth Music of the World	Pinkalicious & Peterrific
12:00 PM	Elinor Wonders Why					Cook's Country	Washington Week
	Rick Steves' Europe					Coop Dreams	Into the Outdoors
12:30 PM	Nature Cat					Lidia's Kitchen	Economic Outlook
	Samantha Brown's Places to Love					America's Heartland	Outdoor Elements
1:00 PM	Molly of Denali					Homemade Live!	To the Contrary
	Journeys in Japan	This Old House	Make It Artsy	Jazzy Vegetarian	Song of the Mountains	Home Diagnosis	This American Land
1:30 PM	Xavier Riddle					Life of Loi!	Education Counts - Michiana
	Under the Radar	Ask This Old House	Outside: Beyond the Lens	Pati's Mexican Table	Song of the Mountains	This Old House	Destination Michigan
2:00 PM	Baking With Julia					This Old House	Politically Speaking
	Epic Trails	American Woodshop	The Joy of Painting	Dining With Chef	Lawrence Welk Show	This Old House	Energy Switch
2:30 PM	Ask This Old House					Ask This Old House	Overheard
	Weekends With Yankee	Woodsmith Shop	Paint This	Trails to Oishii Tokyo	Lawrence Welk Show	Ask This Old House	Wild Harvest
3:00 PM	All Creatures Great and Small / Great American Recipe					The Good Road	Holiday Programming
	Today's Wild West	Volunteer Woodworker	Paint This	Cook's Country	Woodsongs	Motorweek	Great American Recipe
3:30 PM	All Creatures Great and Small / Great American Recipe					Places to Love	Holiday Programming
	Daytripper	Garden Smart	Painting & Travel	America's Test Kitchen	Woodsongs	Radical Restoration	Great American Recipe
4:00 PM	Antiques Roadshow	Finding Your Roots	Nature	NOVA	In Their Own Words	NOVA	Holiday Programming
	Indiana Week in Review	Family Plot	Canvassing the World	Christina Cooks	Live From the Old Steeple	Key Ingredient	Nightmare Theatre
4:30 PM	Antiques Roadshow	Finding Your Roots	Nature	NOVA	In Their Own Words	NOVA	Holiday Programming
	Inside Indiana Business	Life in Bloom	Journey Indiana	Ciao Italia	Live From the Old Steeple	My Greek Table	Nightmare Theatre
5:00 PM	Rick Steves' Europe					PBS Newshour Weekend	PBS News Weekend
	Politically Speaking	Asia Insight	Laura Flanders Show	Whitney Reynolds Show	Ndigo Studio	History Detectives	Nightmare Theatre
5:30 PM	BBC News America					Experience Michiana	Under the Radar
	DW the Day					History Detectives	Nightmare Theatre
6:00 PM	PBS Newshour					Classic Gospel	Antiques Roadshow
	BBC News the Context					PBS News Weekend	PBS News Weekend
6:30 PM	PBS Newshour					Classic Gospel	Antiques Roadshow
	NHK Newslines					Firing Line	Washington Week



(Programs subject to change. For the most up to date schedule, visit wnit.org.)

	7:00 PM	7:30 PM	8:00 PM	8:30 PM	9:00 PM	9:30 PM	10:00 PM	10:30 PM	11:00 PM	11:30 PM
1 SUN	Whitney Houston: The Concert for a New South Africa (6:30 pm)			All Creatures Great and Small: Tricki & Friends			Wolf Hall: Season 1, Ep. 6			Your DNA Secrets
	Decoding Disinformation		Real Rail Adventures		Rick Steves Iceland		Recorded Live at Analog		Austin City Limits	
2 MON	Dinner & A Book	Rick Steves	Mexico Made With Love			Hauser: Classic Gala Concert - Live at the Royal Albert Hall			Memory Makeover	
	PBS NewsHour		Hometowns	Discover Road	Finding Your Roots: And Still I Rise		Broadchurch: Season 1, Ep. 1		Amanpour & Company	
3 TUE	Economic Outlook	Curious Traveler	Henry Louis Gates, Jr: The Fabric of America			Ken Burns: Civil War			Young Forever	
	PBS NewsHour		Education Counts Michiana	Wealthtrack	History Detectives		After Action		Amanpour & Company	
4 WED	Education Counts Michiana	Outdoor Elements	The Mustangs: America's Wild Horses			Nature: Attenborough's Life Journey			Rick Steves Mighty Alps	
	PBS NewsHour		Economic Outlook	Great Lakes Now	Facing Waves	Museum Access	Southern Storytellers		Amanpour & Company	
5 THUR	Experience Michiana	Under the Radar	Il Volo: In the Valley of the Temples			Ragtime, The Musical: All-Star Reunion Concert			Rick Steves Festive Europe	
	PBS NewsHour		Dinner & A Book	To Dine For	Wine First	Chef's Life	Miss Friman's War: Episode 1		Amanpour & Company	
6 FRI	Politically Speaking	American Black Journal	Washington Week	Firing Line	Shamrock Tenors: Live from Belfast			Broadway's Leading Men: A Musical Celebration		
	PBS NewsHour		Experience Michiana	World According to Polka	Nightmare Theatre: White Zombie			Amanpour & Company		
7 SAT	Moments to Remember - My Music (7 pm)				The Who at Kilburn 1977			Revival69: The Concert That Rocked the World		
	Antiques Roadshow: Junk in the Trunk		Celebrity Antiques Road Trip		Ridley: Season 2, Ep. 6		Remember Pearl Harbor		Tell Me More	
8 SUN	Sherlock: The Abominable Bride (6 pm)		Lucy Worsley's Holmes vs. Doyle			Agatha Christie: Lucy Worsley on the Mystery Queen			Vienna Blood: Analyzing the Hidden Truths	
	Monadnock		Real Rail Adventures		Rick Steves Cruising the Mediterranean		Recorded Live at Analog		Austin City Limits	
9 MON	Dinner & A Book	Rick Steves	Antiques Roadshow: Junk in the Trunk 10		Antiques Roadshow: Did Grandma Lie?		Real Rail Adventures: Swiss Winter Magic		Real Rail Adventures: Swiss International Hub	
	PBS NewsHour		Hometowns	Discover Road	Finding Your Roots: Anchormen		Broadchurch: Season 1, Ep. 2		Amanpour & Company	
10 TUE	Economic Outlook	Curious Traveler	Finding Your Roots: The New World		Finding Your Roots: On Broadway		Frontline		TBA	
	PBS NewsHour		Education Counts Michiana	Wealthtrack	History Detectives		After Action		Amanpour & Company	
11 WED	Education Counts Michiana	Outdoor Elements	Nature: Portugal - Wild Land on the Edge		NOVA: Rebuilding Notre Dame		Secrets of the Dead: The Sunken Basilica		Tutankhamun: Allies & Enemies	
	PBS NewsHour		Economic Outlook	Great Lakes Now	Facing Waves	Museum Access	Southern Storytellers		Amanpour & Company	
12 THUR	Experience Michiana	Under the Radar	Season of Light: Christmas with the Tabernacle Choir			USAF Band of Mid America	Purdue 90th Anniversary Christmas Show		Holidays at Murray State 2024	
	PBS NewsHour		Dinner & A Book	To Dine For	Wine First	Chef's Life	Miss Friman's War: Episode 2		Amanpour & Company	
13 FRI	Politically Speaking	American Black Journal	Washington Week	Firing Line	Violent Femmes: 40th Anniversary - Milwaukee Symphony		The Art of Music: Sheryl Crow and Jason Isbell		Celebrity Antiques Road Trip	
	PBS NewsHour		Experience Michiana	World According to Polka	Nightmare Theatre: Don't Look in the Basement			Amanpour & Company		
14 SAT	Lawrence Welk Show: Themes from the Classics		As Time Goes By		Sanditon: Season 1, Ep. 8		The Wild Rose Moon Hour Show		Austin City Limits	
	Antiques Roadshow: Junk in the Trunk		Celebrity Antiques Road Trip		Ridley: Season 2, Ep. 7		Leonardo da Vinci: Episode 1			
15 SUN	Luna & Sophie: Season 3, Ep. 9		Lucy Worsley's Holmes vs. Doyle			All Creatures Great and Small: Season 4, Ep. 1 & 2			Agatha: Curse of Ishtar	
	Fleeting Reality		Real Rail Adventures		American St. Nick		Recorded Live at Analog		Austin City Limits	
16 MON	Dinner & A Book	Rick Steves	Antiques Roadshow: Junk in the Trunk 11		American Masters: Brenda Lee - Rockin' Around			All is Calm: The Christmas Truce of 1914		
	PBS NewsHour		World's Greatest Cruises	Discover Road	Finding Your Roots: Out of the Past		Broadchurch: Season 1, Ep. 3		Amanpour & Company	

(Programs subject to change. For the most up to date schedule, visit wnit.org.)

	7:00 PM	7:30 PM	8:00 PM	8:30 PM	9:00 PM	9:30 PM	10:00 PM	10:30 PM	11:00 PM	11:30 PM	
17 TUE	Economic Outlook	Curious Traveler	Joy - Christmas with the Tabernacle Choir			Too Hot to Handel - The Gospel Messiah			Hope College Christmas Vespers 2023		
	PBS NewsHour		Education Counts Michiana	Wealthtrack	History Detectives		After Action		Amanpour & Company		
18 WED	Education Counts Michiana	Outdoor Elements	The Earthshot Report			NOVA: Lost Tombs of Notre Dame		The Christmas Lecture		Tutankhamun: Allies & Enemies	
	PBS NewsHour		Economic Outlook	Great Lakes Now	Facing Waves	Museum Access	Southern Storytellers		Amanpour & Company		
19 THUR	Experience Michiana	Under the Radar	USAF Band of Mid America	Vibrant Light: Stained Glass of the Basilica of Notre Dame		Festival of Carols		Classic Christmas with the Bach Festival Society		Debbie Gibson Holiday	
	PBS NewsHour		Dinner & A Book	To Dine For	Wine First	Chef's Life	Miss Friman's War: Episode 3		Amanpour & Company		
20 FRI	Politically Speaking	American Black Journal	Washington Week	Firing Line	2023 Andrew University Christmas Program		Christmas at Loretto		Celebrity Antiques Road Trip		
	PBS NewsHour		Experience Michiana	World According to Polka	Nightmare Theatre: Invaders from Space			Amanpour & Company			
21 SAT	Lawrence Welk Show: Christmas		As Time Goes By		Sanditon: Season 2, Ep. 1		Live From the Old Steeple		Austin City Limits		
	Antiques Roadshow: Junk in the Trunk		Celebrity Antiques Road Trip			Ridley: Season 2, Ep. 8		Leonardo da Vinci: Episode 2			
22 SUN	Luna & Sophie: Season 3, Ep. 10		Lucy Worsley's Holmes vs. Doyle			All Creatures Great and Small: Season 4, Ep. 3 & 4				Agatha: Midnight Murders	
	Arts @ IUSB: Holiday Sock Hop		Real Rail Adventures		Anthony Williams' Urban Nutcracker				Austin City Limits		
23 MON	Dinner & A Book	Rick Steves	Antiques Roadshow: Junk in the Trunk 12		The Christmas Lecture		Mary Berry's Highland Christmas		Merry Berry's Ultimate Christmas		
	PBS NewsHour		World's Greatest Cruises	Discover Road	All is Calm: The Christmas Truce of 1914		Ball and Vase		Amanpour & Company		
24 TUE	Economic Outlook	Curious Traveler	Too Hot to Handel - The Gospel Messiah			Vibrant Light: Stained Glass of the Basilica at Notre Dame		USAF Band of Mid America	Purdue 90th Anniversary Christmas Show		
	PBS NewsHour		Education Counts Michiana	Wealthtrack	Mary Berry's Ultimate Christmas		Mary Berry's Highland Christmas		Amanpour & Company		
25 WED	Education Counts Michiana	Outdoor Elements	Call the Midwife Holiday Special 2024			Call the Midwife Holiday Special 2024		Festival of Carols		Christmas with John Rutter	
	PBS NewsHour		Debbie Gibson Holiday	USAF Band of Mid-America	Vibrant Light: Stained Glass of the Basilica at Notre Dame		Christmas at Westminster		Amanpour & Company		
26 THUR	Experience Michiana	Under the Radar	Legends of Michiana: Lynn Coleman			Arts @ IUSB: Holiday Sock Hock		Ready for London 2025	United in Song: Celebrating the American Dream		
	PBS NewsHour		Dinner & A Book	Karamu	Cultural Expressions		Miss Friman's War: Episode 4		Amanpour & Company		
27 FRI	Politically Speaking	American Black Journal	Washington Week	Firing Line	Craft in America		Craft in America		Celebrity Antiques Road Trip		
	PBS NewsHour		Experience Michiana	World According to Polka	Nightmare Theatre: Santa Claus Conquers the Martians			Amanpour & Company			
28 SAT	Lawrence Welk Show: Roses		As Time Goes By		Sanditon: Season 2, Ep. 2		Live From the Old Steeple		Austin City Limits		
	Antiques Roadshow: Junk in the Trunk		Celebrity Antiques Road Trip			Sherlock on Masterpiece: Season 1		Tell Me More	Cobra: Episode 1		
29 SUN	Luna & Sophie: Season 3, Ep. 11		Lucy Worsley's Royal Myths & Secrets			All Creatures Great and Small: Season 4, Ep. 5 & 6				Agatha: Truth of Murder	
	Cats of Malta		Rick Steves Andalucia		Musicians Hall of Fame Induction		Ready for London 2025	Austin City Limits			
30 MON	Dinner & A Book	Rick Steves	Antiques Roadshow: Let's Celebrate			Antiques Roadshow: Body of Work		POV: Who I Am Not		Aging Matter on Aging	
	PBS NewsHour		World's Greatest Cruises	Discover Road	Finding Your Roots: To the Manor Born		Broadchurch: Season 1, Ep. 4		Amanpour & Company		
31 TUE	Economic Outlook	Curious Traveler	Next at the Kennedy Center: Sara Bareilles - New Year's Eve			Next at the Kennedy Center: Cynthia Erivo		Ready for London 2025	Boblo Boats		
	PBS NewsHour		Education Counts Michiana	Wealthtrack	History Detectives		Call the Midwife		Amanpour & Company		

(Programs subject to change. For the most up to date schedule, visit [wnit.org](http://wnit.org).)

## SUNDAY 1

Midnight Aging Backwards 4  
1:00 am Nature: Woodpeckers  
2:00 am Secrets of Dead  
3:00 am Finding Your Roots  
4:00 am Lidia Celebrates America  
5:00 am Celebrity Antiques Road Trip

## MONDAY 2

Midnight Your DNA Secrets  
1:00 am Lucy Worsley  
2:00 am Wolf Hall  
3:00 am Great Performances  
5:00 am Finding Your Roots

## TUESDAY 3

Midnight Memory Makeover  
1:00 am Antiques Roadshow  
2:00 am Henry VIII  
3:00 am Lucy Worsley  
4:00 am Lucy Worsley  
5:00 am Celebrity Antiques Road Trip

## WEDNESDAY 4

Midnight Young Forever  
1:00 am Rick Steves  
2:00 am Iconic America  
3:00 am Henry VIII  
4:00 am Antiques Roadshow  
5:00 am Antiques Roadshow

## THURSDAY 5

Midnight Rick Steves  
1:00 am Rick Steves  
1:30 am 8 Days  
3:00 am Great American Recipe  
4:00 am Great American Recipe  
5:00 am Great American Recipe

## FRIDAY 6

Midnight Aging Backwards 4  
1:00 am Velvet  
2:30 am This Old House  
3:00 am First Contact  
4:30 am 8 Days

## SATURDAY 7

Midnight Broadway's Leading Men  
12:30 am Rick Steves  
1:00 am We Remember  
2:00 am Craft in America  
3:00 am Great American Recipe  
4:00 am Great American Recipe  
5:00 am Civilizations

## SUNDAY 8

Midnight TBA  
1:00 am Rick Steves  
1:30 am First Contact  
3:00 am Civilizations  
4:00 am Queen Elizabeth  
5:00 am Pope Francis

## MONDAY 9

Midnight Rick Steves  
1:00 am Lucy Worsley  
2:00 am Lucy Worsley  
3:00 am Velvet  
4:30 am Chef's Life  
5:00 am Celebrity Antiques Road Trip

## TUESDAY 10

Midnight Amanpour & Co.  
1:00 am Antiques Roadshow  
2:00 am Art Happens Here  
3:00 am Lucy Worsley  
4:00 am Lucy Worsley  
5:00 am Lucy Worsley

## WEDNESDAY 11

Midnight Amanpour & Co.  
1:00 am Finding Your Roots  
2:00 am Frontline  
3:00 am Art Happens Here  
4:00 am Antiques Roadshow  
5:00 am Antiques Roadshow

## THURSDAY 12

Midnight Amanpour & Co.  
1:00 am NOVA: Notre Dame  
2:00 am Secrets of Dead  
3:00 am Great American Recipe  
4:00 am Great American Recipe  
5:00 am Great American Recipe

## FRIDAY 13

Midnight Amanpour & Co.  
1:00 am Velvet  
2:30 am This Old House  
3:00 am Secrets of Dead  
4:00 am Nature: Portugal  
5:00 am NOVA: Notre Dame

## SATURDAY 14

Midnight Amanpour & Co.  
1:00 am American Masters  
2:00 am Violent Femmes  
3:00 am Great American Recipe  
4:00 am Great American Recipe  
5:00 am Civilizations

## SUNDAY 15

Midnight Caverns Sessions  
12:30 am Songs at Center  
1:00 am Nature: Portugal  
2:00 am Secrets of Dead  
3:00 am Velvet  
4:30 am Ask This Old House  
5:30 am Civilizations

## MONDAY 16

Midnight Agatha Christie  
1:00 am Rick Steves  
2:00 am All Creatures Great & Small  
3:00 am Keith Haring  
4:00 am Violent Femmes  
5:00 am Celebrity Antiques Road Trip

## TUESDAY 17

Midnight Amanpour & Co.  
1:00 am American Masters  
3:00 am Lucy Worsley  
4:00 am All Creatures Great & Small  
5:00 am All Creatures Great & Small

## WEDNESDAY 18

Midnight Amanpour & Co.  
1:00 am Rick Steves  
1:30 am Too Hot to Handel  
3:00 am American Masters  
5:00 am Antiques Roadshow

## THURSDAY 19

Midnight Amanpour & Co.  
1:00 am NOVA: Notre Dame  
2:00 am Secrets of Dead  
3:00 am Great American Recipe  
4:00 am Great American Recipe  
5:00 am Great American Recipe

## FRIDAY 20

Midnight Amanpour & Co.  
1:00 am Velvet  
2:30 am Ask This Old House  
3:00 am Secrets of Dead  
4:00 am Earthshot Report  
5:00 am NOVA: Notre Dame

## SATURDAY 21

Midnight Amanpour & Co.  
1:00 am Nature: Alps  
2:00 am Nature: Alps  
3:00 am Great American Recipe  
4:00 am Great American Recipe  
5:00 am Elon Musk

## SUNDAY 22

Midnight Caverns Sessions  
12:30 am Songs at Center  
1:00 am Earthshot Report  
2:00 am Secrets of Dead  
3:00 am Velvet  
4:30 am Ask This Old House  
5:00 am Angela Merkel

## MONDAY 23

Midnight Agatha Christie  
1:00 am All Creatures Great & Small  
2:00 am All Creatures Great & Small  
3:00 am Nature: Alps  
4:00 am Nature: Alps  
5:00 am Celebrity Antiques Road Trip

## TUESDAY 24

Midnight Amanpour & Co.  
1:00 am Mary Berry's Christmas  
2:00 am Mary Berry's Christmas  
3:00 am Lucy Worsley  
4:00 am All Creature Great & Small  
5:00 am All Creatures Great & Small

## WEDNESDAY 25

Midnight Amanpour & Co.  
1:00 am Rick Steves  
1:30 am Joy  
3:00 am Mary Berry's Christmas  
4:00 am Mary Berry's Christmas  
5:00 am Antiques Roadshow

## THURSDAY 26

Midnight Amanpour & Co.  
1:00 am Call the Midwife  
2:00 am Mary Berry's Christmas  
3:00 am Too Hot to Handel  
4:30 am Joy

## FRIDAY 27

Midnight Amanpour & Co.  
1:00 am Velvet  
2:30 am This Old House  
3:00 am Great American Recipe  
4:00 am Civilizations  
5:00 am Civilizations

## SATURDAY 28

Midnight Amanpour & Co.  
1:00 am Craft in America  
2:00 am Craft in America  
3:00 am Too Hot to Handel  
4:30 am Joy

## SUNDAY 29

Midnight Caverns Sessions  
12:30 am Songs at Center  
1:00 am Velvet  
2:30 am Great American Recipe  
3:00 am Margaret  
4:30 am Margaret  
5:30 am Chef's Life

## MONDAY 30

Midnight Agatha Christie  
1:00 am All Creatures Great & Small  
2:00 am All Creatures Great & Small  
3:00 am Craft in America  
4:00 am Craft in America  
5:00 am Celebrity Antiques Road Trip

## TUESDAY 31

Midnight Amanpour & Co.  
1:00 am Rick Steves  
1:30 am Antiques Roadshow  
2:30 am Lucy Worsley  
3:30 am All Creature Great & Small  
4:30 am All Creatures Great & Small  
5:30 am Baking with Julia

(Programs subject to change. For the most up to date schedule, visit [wnit.org](http://wnit.org).)

## SUNDAY 1

Midnight Nightmare Theatre  
2:00 am Austin City Limits  
3:00 am NOVA: Building Stuff  
4:00 am Nature: Woodpeckers  
5:00 am Secrets of Dead

## MONDAY 2

Midnight Lucy Worsley  
1:00 am Wolf Hall  
2:00 am Austin City Limits  
3:00 am Lucy Worsley  
4:00 am Lucy Worsley  
5:00 am Rick Steves

## TUESDAY 3

Midnight Antiques Roadshow  
1:00 am Henry VII  
2:00 am Amanpour & Co.  
3:00 am Antiques Roadshow  
4:00 am Antiques Roadshow  
5:00 am Henry VIII

## WEDNESDAY 4

Midnight Rick Steves  
1:00 am Iconic America  
2:00 am Amanpour & Co.  
3:00 am Driving While Black  
5:00 am Iconic America

## THURSDAY 5

Midnight Places to Love  
12:30 am 8 Days  
2:00 am Amanpour & Co.  
3:00 am First Contact  
4:30 am 8 Days

## FRIDAY 6

Midnight Velvet  
1:30 am This Old House  
2:00 am Amanpour & Co.  
3:00 am This Old House  
3:30 am Ask This Old House  
4:00 am Velvet  
5:30 am This Old House

## SATURDAY 7

Midnight We Remember  
1:00 am Craft in America  
2:00 am Amanpour & Co.  
3:00 am Washington Week  
3:30 am Firing Line  
4:00 am We Remember  
5:00 am Craft in America

## SUNDAY 8

Midnight Nightmare Theatre  
2:00 am Austin City Limits  
3:00 am 8 Days  
4:30 am First Contact

## MONDAY 9

Midnight Lucy Worsley  
1:00 am Lucy Worsley  
2:00 am Austin City Limits  
3:00 am Lucy Worsley  
4:00 am Lucy Worsley  
5:00 am Lucy Worsley

## TUESDAY 10

Midnight Antiques Roadshow  
1:00 am Art Happens Here  
2:00 am Amanpour & Co.  
3:00 am Antiques Roadshow  
4:00 am Antiques Roadshow  
5:00 am Art Happens Here

## WEDNESDAY 11

Midnight Finding Your Roots  
1:00 am Frontline  
2:00 am Amanpour & Co.  
3:00 am Finding Your Roots  
4:00 am Finding Your Roots  
5:00 am Frontline

## THURSDAY 12

Midnight NOVA: Notre Dame  
1:00 am Secrets of Dead  
2:00 am Amanpour & Co.  
3:00 am Nature: Portugal  
4:00 am NOVA: Notre Dame  
5:00 am Secrets of Dead

## FRIDAY 13

Midnight Velvet  
1:30 am This Old House  
2:00 am Amanpour & Co.  
3:00 am This Old House  
3:30 am Ask This Old House  
4:00 am Velvet  
5:30 am This Old House

## SATURDAY 14

Midnight American Masters  
1:00 am Violent Femmes  
2:00 am Amanpour & Co.  
3:00 am Washington Week  
3:30 am Firing Line  
4:00 am American Masters  
5:00 am Violent Femmes

## SUNDAY 15

Midnight Nightmare Theatre  
2:00 am Austin City Limits  
3:00 am NOVA: Notre Dame  
4:00 am Nature: Portugal  
5:00 am Secrets of Dead

## MONDAY 16

Midnight All Creatures Great  
1:00 am All Creatures Great  
2:00 am Austin City Limits  
3:00 am Lucy Worsley  
4:00 am All Creatures Great  
5:00 am All Creatures Great

## TUESDAY 17

Midnight American Masters  
2:00 am Amanpour & Co.  
3:00 am Antiques Roadshow  
4:00 am American Masters

## WEDNESDAY 18

Midnight Places to Love  
12:30 am Too Hot to Handel  
2:00 am Amanpour & Co.  
3:00 am Joy  
4:40 am Too Hot to Handel

## THURSDAY 19

Midnight NOVA: Notre Dame  
1:00 am Secrets of Dead  
2:00 am Amanpour & Co.  
3:00 am Earthshot Report  
4:00 am NOVA: Notre Dame  
5:00 am Secrets of Dead

## FRIDAY 20

Midnight Velvet  
1:30 am This Old House  
2:00 am Amanpour & Co.  
3:00 am This Old House  
3:30 am Ask This Old House  
4:00 am Velvet  
5:30 am This Old House

## SATURDAY 21

Midnight Nature: Alps  
1:00 am Nature: Alps  
2:00 am Amanpour & Co.  
3:00 am Washington Week  
3:30 am Firing Line  
4:00 am Nature: Alps  
5:00 am Nature: Alps

## SUNDAY 22

Midnight Nightmare Theatre  
2:00 am Austin City Limits  
3:00 am NOVA: Notre Dame  
4:00 am Earthshot Report  
5:00 am Secrets of Dead

## MONDAY 23

Midnight All Creatures Great  
1:00 am All Creatures Great  
2:00 am Austin City Limits  
3:00 am Lucy Worsley  
4:00 am All Creatures Great  
5:00 am All Creatures Great

## TUESDAY 24

Midnight Mary Berry Christmas  
1:00 am Mary Berry Christmas  
2:00 am Amanpour & Co.  
3:00 am Antiques Roadshow  
4:00 am Mary Berry Christmas  
5:00 am Mary Berry Christmas

## WEDNESDAY 25

Midnight Debbie Gibson Christmas  
12:30 am Joy  
2:00 am Amanpour & Co.  
3:00 am Too Hot to Handel  
4:30 am Joy

## THURSDAY 26

Midnight Call the Midwife  
1:00 am Mary Berry Christmas  
2:00 am Amanpour & Co.  
3:00 am Call the Midwife  
4:00 am Call the Midwife  
5:00 am Mary Berry Christmas

## FRIDAY 27

Midnight Velvet  
1:30 am This Old House  
2:00 am Amanpour & Co.  
3:00 am This Old House  
3:30 am Ask This Old House  
4:00 am Velvet  
5:30 am This Old House

## SATURDAY 28

Midnight Craft in America  
1:00 am Craft in America  
2:00 am Amanpour & Co.  
3:00 am Firing Line  
3:30 am Washington Week  
4:00 am Craft in America  
5:00 am Craft in America

## SUNDAY 29

Midnight Nightmare Theatre  
2:00 am Austin City Limits  
3:00 am Call the Midwife  
4:00 am Velvet  
5:30 am Places to Love

## MONDAY 30

Midnight All Creatures Great  
1:00 am All Creatures Great  
2:00 am Austin City Limits  
3:00 am Lucy Worsley  
4:00 am All Creatures Great  
5:00 am All Creatures Great

## TUESDAY 31

Midnight Antiques Roadshow  
1:00 am POV  
2:30 am Amanpour & Co.  
3:30 am Antiques Roadshow  
4:30 am Antiques Roadshow  
5:30 am Places to Love



**Michiana**  
KIDS CLUB



**PBS Michiana Kids Club members get cool stuff like –**

- a PBS Michiana Kids Club backpack with PBS Kids swag
- a special treat from Chick-fil-A
- free or discounted ticket offers to area children’s performances
- early registration for PBS Michiana Kids Club events
- an on-air birthday greeting during their birthday month and birthday listing in the Planner
- a PBS Kids birthday card and special birthday gift
- and more!

**ANYONE** who donates \$50 annually can enroll their kids or grandkids. Joining is easy!  
CALL 574-675-9648, EXT. 311

**HAPPY BIRTHDAY!**

**PBS Michiana Kids Club Members!**



NAME	AGE
Mitchell Bechtel	7
Auroral Callahan	6
David Diaz	4
Ruby Evans	5
Samantha Evans	8
Emerson Frey	10
Noelle Gaffney	6
Justin Hall	10
Kevin Hall	10
Millie Holderman	6
Carlee Holt	8
Aries Riggs	4
Lashombrie Rivers	4
Willow Schirripa	3
Jax Schrock	7
Liam Sukolics	10
Lucas Sukolics	10
Elizabeth Taylor	2
Coden Thompson	4
Dean Wamsley	9
Maura Wamsley	12
Greyson Unger	9
Lyle Unger, IV	9
Sophia Unger	9
Oona Vandersloot	11
Eden Wilken	3
Liam Wise	11



**Proud Supporter of PBS Kids Programming!**

PBS KIDS and the PBS KIDS Logo are trademarks owned by Public Broadcasting Service. Used with permission.





# CARL

## THE COLLECTOR



**Add Carl & friends  
to YOUR collection!**

**Streaming Free November 14**



# CHILDREN'S PROGRAMMING

PBS KIDS® has a whole-child approach to learning, offering media content that supports all of the key developmental areas a child needs to be successful in life – from communication and critical thinking skills to literacy and science.

**FOR PARENTS:**  
[pbs.org/parents](http://pbs.org/parents)

**FOR EDUCATORS:**  
[pbslearningmedia.org](http://pbslearningmedia.org)

**FOR KIDS:**  
[pbskids.org](http://pbskids.org)



## MONDAY - FRIDAY

6:00 AM Arthur  
 6:30 AM Odd Squad  
 7:00 AM Wild Kratts  
 7:30 AM Alma's Way  
 8:00 AM Lyla in the Loop  
 8:30 AM Carl the Collector  
 9:00 AM Daniel Tiger  
 9:30 AM Rosie's Rules  
 10:00 AM Sesame Street  
 10:30 AM Work it Out Wombats  
 11:00 AM Donkey Hodie  
 11:30 AM Pinkalicious  
 12:00 PM Elinor Wonders Why  
 12:30 PM Nature Cat  
 1:00 PM Curious George/Molly  
 1:30 PM Xavier Riddle

## SUNDAY

6:00 AM Mister Rogers  
 6:30 AM Arthur  
 7:00 AM Molly of Denali/Wild Kratts  
 7:30 AM Alma's Way  
 8:00 AM Cyberchase  
 8:30 AM SciGirls

34.1 - Over the Air  
 Comcast - channel 10, 191, 1035  
 26 in LaPorte and Valparaiso  
 Dish - 34 or 1034  
 DirecTV - 34 or 1034  
 AT&T U-verse - 34 or 1034  
 Mediacom - 704



## SATURDAY

6:00 AM Mister Rogers  
 6:30 AM Arthur  
 7:00 AM Wild Kratts  
 7:30 AM Alma's Way  
 8:00 AM DIY Science Time  
 8:30 AM Wild Kratts/Carl the Collector  
 9:00 AM Daniel Tiger  
 9:30 AM Reading Buddies  
 10:00 AM Sesame Street  
 10:30 AM Camp TV  
 11:00 AM Woodsongs Kids  
 11:30 AM Youth Music of the World  
 12:00 PM Coop Dreams

## SUNDAY

6:00 AM Let's Learn  
 6:30 AM Let's Learn  
 7:00 AM Wimee's Words  
 7:30 AM Albie's Elevator  
 8:00 AM WordGirl  
 8:30 AM WordGirl  
 9:00 AM Daniel Tiger  
 9:30 AM Curious Crew  
 10:00 AM Sesame Street  
 10:30 AM Kid Stew  
 11:00 AM Infinite Art Hunt  
 11:30 AM Pinkalicious  
 12:00 PM Into the Outdoors

34.2 - Over the Air  
 Comcast - 371  
 Mediacom - 120

This schedule begins November 14

	Monday-Friday	Saturday-Sunday
6:00 AM	Clifford	The Cat in the Hat
6:30 AM	Sesame Street	Dinosaur Train
7:00 AM	Pinkalicious	Pinkalicious
7:30 AM	Mecha Builders	Peg + Cat
8:00 AM	Sesame Street	Sesame Street
8:30 AM	Milo	Milo
9:00 AM	Work It Out Wombats!	Work It Out Wombats!
9:30 AM	Work It Out Wombats!	Work It Out Wombats!
10:00 AM	Daniel Tiger	Daniel Tiger
10:30 AM	Daniel Tiger	Daniel Tige
11:00 AM	Carl the Collector	Carl the Collector
11:30 AM	Curious George	Curious George
NOON	Donkey Hodie	Donkey Hodie
12:30 PM	Donkey Hodie	Donkey Hodie
1:00 PM	Elinor Wonders Why	Elinor Wonders Why
1:30 PM	Rosie's Rules	Super Why!
2:00 PM	Rosie's Rules	Rosie's Rules
2:30 PM	Xavier Riddle	Xavier Riddle
3:00 PM	Alma's Way	Alma's Way
3:30 PM	Alma's Way	Molly
4:00 PM	Lyla in the Loop	Lyla in the Loop
4:30 PM	Arthur	Arthur
5:00 PM	Odd Squad	Odd Squad
5:30 PM	Odd Squad	Nature Cat
6:00 PM	Wild Kratts	Wild Kratts
6:30 PM	Wild Kratts	Ready Jet Go!
7:00 PM	Lyla in the Loop	PBS Kids Family Night
7:30 PM	Nature Cat	
8:00 PM	Molly of Denali	
8:30 PM	Hero Elementary	Cyberchase
9:00 PM	Cyberchase	

34.3 - Over the Air  
Comcast - 1159  
Mediacom - 694  
Charter - 196  
Quality Cablevision - 34.3  
Sister Lakes Cable TV - 34.3

Acme Communications - 36  
Winamac CATV - 34  
Pulaski IPTV -36  
RTC1 - 9  
DirecTV - 288  
Livestream: [wnit.org/pbskids247](http://wnit.org/pbskids247)

6:00 AM	Pre-K	Wimee's Words, Simple Gifts Series, Signing Time, PBS Kids Shows
7:00 AM	Pre-K	Let's Learn
8:00 AM	Kindergarten	Read Write ROAR!, Math Mights, and More
9:00 AM	1st Grade	
10:00 AM	2nd Grade	
11:00 AM	3rd Grade	Lunch Time block: Live from The Opera House, Camp TV, StoryPirates TV, Math & Movement
12-1:30 PM	4th-5th Grade	
1:30-3 PM	Pre-K	Wimee's Words, Simple Gifts Series, Signing Time, PBS Kids Shows
3-6:00 PM	4th-8th	Afternoon Block: Make48, Make It Artsy, Extra Credit, Into The Outdoors, DIY Science Time, SciGirls, Curious Crew, Story Pirates TV
6-7:00 PM	K-3	Read Write ROAR!, Math Mights, and More
7-8:00 PM	K-3	Quiet Time and Local Shows: Live from the Opera House, Camp TV, AADL Storytime
8-9:00 PM	PBS programs related to educational standards	Road Trip Nation, Great Lakes Now, Destination Michigan, StartUp, Native Report, PBS Specials

34.5 - Over the Air  
Comcast - 1160

Or livestream at:  
[michiganlearning.org](http://michiganlearning.org)

## November/December Weekend and Daytime Pledge Schedule

### Saturday, Nov. 30

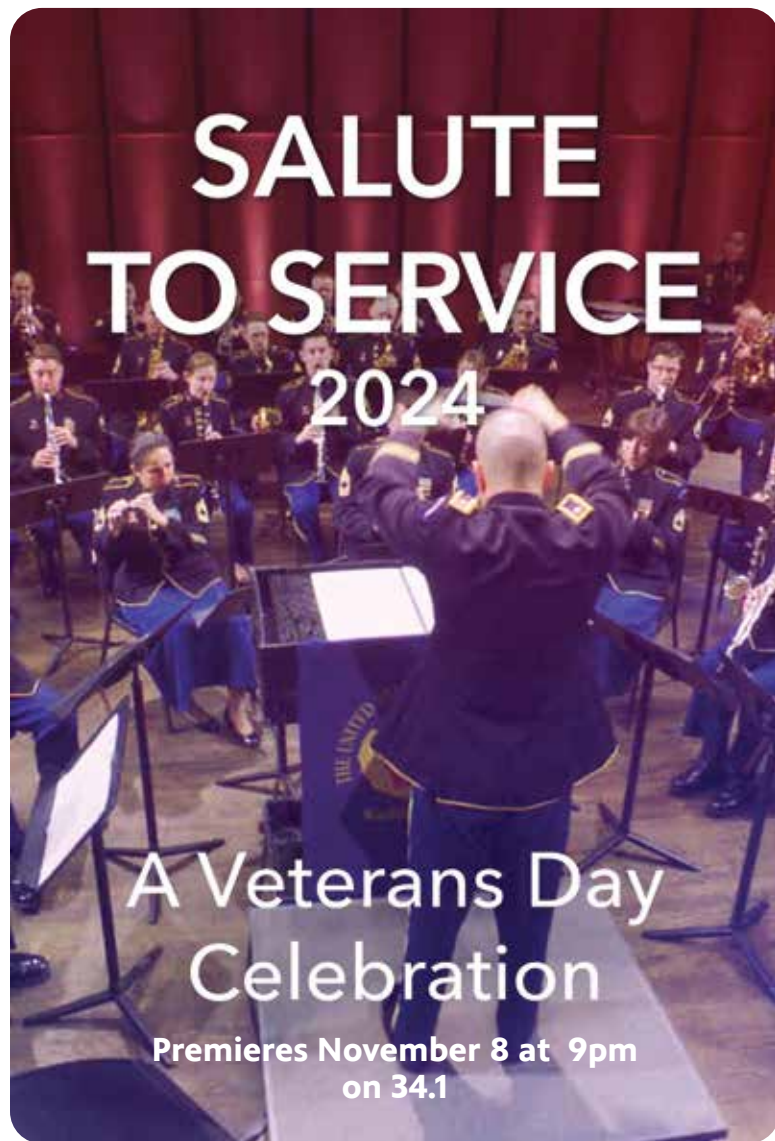
- 7:00am Memory Makeover with Dr. Amen
- 8:30am Behind the Scenes of Leonardo da Vinci with Ken Burns
- 10:30am Dinner & a Book
- 11:00am Rick Steves Mighty Alps
- 11:30am Rick Steves European Christmas
- 1:30pm America's Test Kitchen Celebrates 25 Years
- 3:00pm Mary Berry's Highland Christmas
- 4:30pm Lawrence Welk Holiday Special  
– Great Moments and Memories

### Sunday, Dec. 1

- 3:00pm Easy Yoga for Arthritis with Peggy Cappy
- 4:00pm 70s Soul Superstars (My Music)
- 6:30pm Whitney Houston – The Concert for a New South Africa

### Saturday, Dec. 7

- 7:00am Your DNA Secrets Revealed
- 8:30am Young Forever with Dr. Hyman
- 10:30am Dinner & a Book
- 11:00am America's Test Kitchen Celebrates 25 Years
- 12:30pm Rick Steves Europe: Great German Cities
- 2:30pm This Land is Your Land (My Music)
- 4:00pm Classical Rewind (My Music)
- 5:30pm Engelbert Humperdinck in Hawaii



*Happy Holidays  
and Happy New Year*  
from all of us at



Please see our schedules for our holiday program offerings!

Available with  
**PBS**  **Passport**



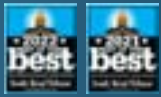
**MASTERPIECE**  
THE  
**MARLOW MURDER CLUB**

**NEW SERIES**  
**STREAM ALL EPISODES**



**HOLY CROSS VILLAGE**  
AT NOTRE DAME  
Sponsored by the Brothers of Holy Cross

Join Our *Award-Winning*  
Community!



*Best...*  
ASSISTED LIVING  
RETIREMENT/55+ COMMUNITY  
NURSING HOME



HERE TO HELP YOU

Enjoy Life *to the Fullest*

- Independent Villa Homes
- Independent Apartments
- Assisted Living Apartments
- Skilled Nursing & Therapy Services



ASK ABOUT AVAILABILITY!  
Not ready to move today?  
Join our Future Residents Club  
to wait for the perfect space!

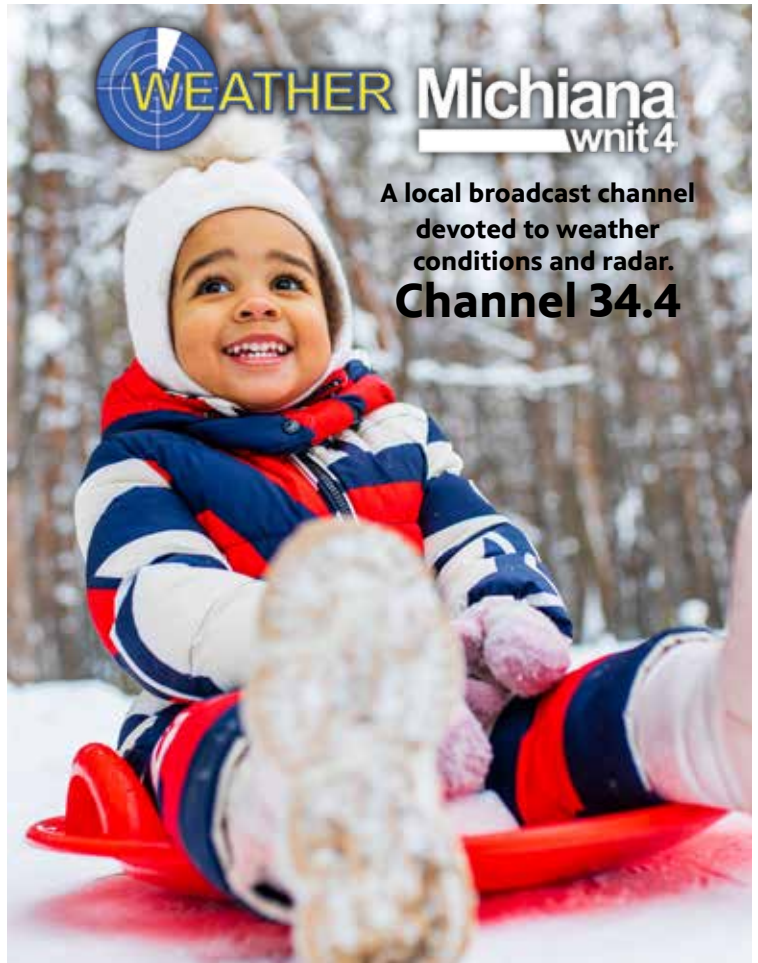
(574) 251-2235

hello@holycrossvillage.org  
www.holycrossvillage.org

54515 SR 933 North, Notre Dame, IN 46556

**WEATHER** Michiana  
wnit 4

A local broadcast channel  
devoted to weather  
conditions and radar.  
**Channel 34.4**



# Build a Legacy with WNIT

We've partnered with FreeWill to make it easy to create your will for free and build a legacy that sustains public television for future generations.

Get started today at  
[FreeWill.com/WNIT](https://FreeWill.com/WNIT).



# Directors' Circle

The WNIT Directors' Circle represents a very dedicated and select group of individuals who, by their commitment, contribute to the total annual support which is the foundation of WNIT's operating budget. These essential annual contributions make possible the great programs that everyone in Michiana enjoys.

## Diamond Level (\$10,000 +)

Anonymous Foundation (2)  
Hari and Seema Agarwal  
Estate of Jack and  
Shirley Appleton  
Billie and David Bankoff  
Arthur J. Decio\*  
Mrs. Sue Hiler  
James and Jill Hillman  
Brian and Melinda Inniger  
James and Christine Kelly  
Michael Leap  
Don and Joan Lyons  
Barb and John Phair  
Ernestine M. Raclyn\*  
Robby and Pamela Rask  
Pat and Sue Ruszkowski  
Lorrie and Bill Schmuhl  
James F. Shea  
Tom\*\* and Maria Slager  
Craig D. Sullivan and  
Cynthia L. Harris  
Sonny\* and Dee\* Tepe  
Janet and Larry Thompson  
Thomas F. and Anita J. Veldman  
Scott and Kimberlee Welch  
Barbara Wind  
Wen and Susan Wu

## Platinum Level (\$5,000 +)

Anonymous Foundation  
Louise and Stephan Anella  
Estephan R. Awad  
Edward L. Carrico  
Katy and Tim Demarais  
Bipin and Linda Doshi  
Paul Levett and Judith Eck  
FDC Graphic Films, Inc.  
Roger and Joyce Foley  
Dave and Ginny Gibson  
Howard and Marie Goodhew Fund  
of the Community Foundation  
of St. Joseph County  
Janice and Larry Harding  
Eleanor Keb  
Mike and Dianne Kelbel  
Marjo and Kevin Kelly  
Ralph Komasiński and  
Katherine Humphreys  
Michael and Rebecca Kubacki  
Jill Long Thompson  
Chris Maziar  
Chris and Carmi Murphy  
Gerald H. Shaffer  
Robert and Christine Smith  
Michael and Colleen Thomas  
Welter Foundation  
Barbara Williams

## Gold Level (\$2,500 +)

Anonymous (2)  
Kevin Barker  
Julie and Thomas Brenner  
Richard and Jean Dennen  
Mr and Mrs Robert Elick  
Joseph and Noreen Faulkner  
Mary Beth and Greg Giczi  
Hand Family Foundation, Inc.  
James W. and Sally F. Hubbard

Edward M. Jordanich\*\*  
Timothy and Sue Liddell  
Ursula and Daniel Madejczyk  
Sara and Abraham\*\* Marcus  
Susan Ohmer and Donald Crafton  
Michael and Amy Phend  
Jeff and RaeLee Rea  
William Richey  
Dr. and Mrs. Mark A Richter  
John D. and Carol Zeglis

## Silver Level (\$1,000 +)

Jeannine and Nafe Alick, Sr.  
Nafe S. Alick  
Shirley M. Anderson  
Anonymous (3)  
Bruce and Linda Bancroft  
Kathy Malone Beeler  
George and Janice Beutter  
Jo Ann and Joe Blazek  
Glen Blinn  
James Bowman  
Kimberley D. Bow Sundy  
Gina and Jim Bremner  
Janette Burkhart-Miller  
Mrs. James Butler  
Dirkus Callahan  
Jack and Karen Cittadine  
Peg Claeys  
Barbara Clausen  
Marianne Corr  
Fred Dean  
Barbara Dillon  
Candy Discavage  
Nancy Dunbar  
Jan Farron  
Fred and Mary Jane Ferlic  
Tony Fitts and Ramona Payne  
Martha Foreman  
Stephen and Barbara Fredman  
Jody and Mike Freid  
Mrs. L. Craig Fulmer  
Rodney and Carol Ganey  
Van Gates  
Gates Fund of the Community  
Foundation of St.  
Joseph County  
William and Leslie Gitlin  
Maggie and Steve Goldberg  
Frank Greene  
Trent Grocock  
Loren and Ann Hamel  
Edward and Joan Hardig  
Drs. James and Holly Harris  
Dan Hektor and Tela  
Schulman-Hektor  
Jennifer and Frederick Helmen  
Steven and Ann Herendeen  
Linda Higbee  
Mary Suzanne Horan  
Keim and Sylvia Houser  
Duane and Beth Huffer  
Dr. and Mrs. Tom Hughes  
Huizenga Family Foundation  
Interstate Asphalt  
Nancy Johnson  
Carol and Craig Kapson  
Bob and Pat Kill  
Richard and Susan Klepinger  
Susan K. Kratz  
Trevor and Kim Kubatzke  
Richard Lamanna

Philip and Becky Laney  
Drs. Gail English and  
Nels Leininger  
John Lloyd  
Mr. and Mrs. Philip Lux  
Paul and Jessica Maich  
Jason and Kirsten Marker  
John Mastrojohn and Mike Davids  
Wade Mayberry  
Dr. Debra and Rodney McClain  
Judith McDowell  
William and Linda Meyer  
Jane K. Miller  
Robert Mitsch  
Dr. and Mrs. Brian Moloney  
Pat and Carol Moody  
Leigh and Marcia Morris  
Dorothy Mottl  
Neil and Diane Orians  
Joan Polaskey  
Howard and Charlotte Poole  
Dr. Yupadi Prasertwanitch  
Carol Purdy  
Claude and Mary Renshaw  
The Honorable James W. Rieckhoff  
Charles Rizzo  
Judith Robert  
June Rollinger  
Steve and Connie Rufenbarger  
The Paul Saltzgaber Memorial  
Fund for Reading,  
Writing and the Arts  
Dan and Nancy Schmelter  
Kenton and Sally Schreck  
Cari and Barry Shein  
James and Patricia Short  
Rich and Sarah Solano  
William and Jennifer Squiers  
Carolyn Stacik  
Rebecca Stoltzfus and Kevin Miller  
Perry Stow and Andrea  
Mather-Stow  
George C. Stump  
Patricia Taplick  
Richard Treckelo  
Susan Vanek  
Rich and Donna Vavra-Musser  
Peggy Weed  
Robert F. Werner Jr. and  
Kathleen A. Werner  
Marty and Kathleen Wills

## Bronze Level (\$500 +)

Anonymous (8)  
Audrey Alderfer  
Eric and Sandy Amt  
Dottie and Tom Arnold  
Orrin and Gwen Bailey  
Reginald F. Bain  
Tim and Mary Baker  
Stephen and Nancy Ball  
Stuart and Paula Barb  
Christine Barker  
Joseph and Marzy Bauer  
Tania Bengtsson  
David and Teresa Betz  
Anne Birky  
Hayley Boling  
Kenneth Boyd  
Elizabeth Naquin Borger  
Brian and Jeannelle Brady  
George and Martha Buckingham

George and Patricia Burgoyne  
Heidi Beidinger-Burnett  
and Bruce Burnett  
Emily Neufeld and Drew  
Buscareno  
Jeffrey and Angela Buysse  
Deborah Cafiero  
Terri Calkins  
Edward and Carla Chester  
Leslie Choitz  
Geoff and Kathie Church  
Kyra Clark  
Eugene Cocanower  
Frank and Patricia Criniti  
Julia A. Crume  
Dale and Mary Lou Deardorff  
Robert Deputy  
Ann and Paul Divine  
Robin and Lisa Douglass  
Greg and Mary Downes  
Joel and Amy Duthie  
Jill and Chris Erb  
Diane Eskridge  
Ed Everett and Kitty Rose  
Dorothy Feigl  
Thomas Felger  
Frank and Wendy Folk  
James A. Freel and  
Kathryn Waltz-Freel  
Dianna Fox  
George and Kathy Freese  
Robert and Sharon Froschauer  
Elizabeth Fulnecky  
Victor Gamble  
Susan L. Ganser  
Alan and Elizabeth Graf  
Lowell and Judy Hamel  
Joan Hardesty  
Deborah Harris  
Sharee and Frank Hartman  
Charles S. Hayes  
Paul and Christie Helquist  
Kevin Hochstedler  
Jane Hoffman  
Martha and Scott Hollett  
Jane Hunter  
Nelson Hurt  
Michael and Janice Imgrund  
Robert and Judith Jochem  
Thomas and Nondas Lynn Joyner  
Dick and Sandie Judd  
Rowan Kelley and Amanda  
Miller Kelley  
Dale and Judith Keltner  
Thomas Kendle  
Maggie Kernan  
Karl and Karen Kingsley  
Charles and Celia Kirk  
James and Nancy Krzyzewski  
Stephen and Hillary Lagattuta  
Brian and Ginger Lake  
Alexander and Nancy Lappin  
Michael and Karen Lemmon  
Charles Leone  
Robert Lerch  
Ann and Gary Linley  
George and Denise Lynch  
Sara Marbach  
William A. and Luann Mashke  
Nathan and Sonya Mateer Rempel  
Linda and Lowell May  
Donald O. Maylath

Barbara McHugh  
Joann and Brian McMahon  
Stephen and Connie McTigue  
Shari and Tom Mellin  
Max and Lydia Mertz  
David and Renee Millar  
Brad and Mickey Miller  
Dr. and Mrs. Robert Mitchell  
Anila and James Mondabaugh  
Kevin and Anita Morrison  
Mary Naquin  
Lewis and Belle Naylor  
Mark and Kathleen Neal  
Nell Newton  
Frank and Wendy Folk  
Donald E. Nuner, Jr.  
John and Janice O'Leary  
Sue and Philip Panzica  
Katherine Perry  
Anne Petelle  
Kathy and Thomas Platt  
Michael Pound  
Anne Reel  
Ruth J Retzke  
Timothy and Shelly Rice  
Rieth-Riley Construction Co., Inc.  
Rachel Ridley  
Jean Rogers  
Gerald Rohan  
Paul and Melinda Romanetz  
Harvey and Janet Ross  
David and Mitzi Sabato  
Dr. William and Diane Sarnat  
Richard and Nancy Saunders  
Judy and Bob Schmuhl  
Rhoda Schrag  
Mike and Jill Schrage  
Edward and Nancy Schultz  
Jane Sears  
Tania Shaum  
Timothy and Margaret Shelly  
Mary T. Short  
Byron and Eloise Smith  
Jennifer and Mark Smith  
Eilyn Stecker and Peter Smith  
Mark and Vicki Smucker  
Oliver Songlingco  
Thomas H Story  
Rich and Donna Vavra-Musser  
Joyce and William Veldman  
Robert and Kathleen Wall  
Anthony Warning  
Charles and Mary Weber  
John and Hannelore Weber  
Cynthia Wendzonka  
Phid and Jeff Wells  
Dorothy and Dar Wiekamp\*  
Jeff and Kelly Wilcoxson  
Marcus Winchester  
Jody Wiseman  
James and Joann Wittenbach  
Nancy Wuttrich  
Pam and Don Wycliff  
Sharon Yeager and Henry Veldman  
Douglas and Janette Yoder  
Kenneth E. Yoder  
Linda Yoder  
Mary Lehman Yoder  
Kathryn and Lorenzo Zeugner

\*Deceased Charter Director  
\*\* Deceased

# PBS Michiana - wnit Supporters

Information correct as of  
press date. For a full listing  
of program sponsors, please  
contact WNIT.

## **100 Black Men of Greater South Bend**

Legends: Gladys Muhammad

## **1st Source Bank**

Antiques Roadshow

Austin City Limits

Black History Month 2024

From Signal to Story: 50 Years of  
WNIT Public Television

Great Performances

Inside Indiana Business

Legends: Gladys Muhammad

NOVA

PBS NewsHour

Prime Time Programming

## **32 Pearls Family Dentistry**

Children's Programming

## **AM General**

Black History Month 2024

Legends: Gladys Muhammad

## **Afdent**

Children's Programming

Prime Time Programming

## **African American Community Fund**

Legends: Gladys Muhammad

## **Aladdin's Eatery**

Cooking Programming

Miscellaneous Programming

## **Alick's Home Medical**

Antiques Roadshow

Black History Month 2024

From Signal to Story: 50 Years of  
WNIT Public Television

Hispanic Heritage Month 2024

Indigenous Peoples & Native

American Heritage Month 2024

Lawrence Welk

Legends: Gladys Muhammad

Legends: Scott and Kim Welch

## **Alpha Kappa Alpha**

Legends: Gladys Muhammad

## **American Family Insurance, Don Hollingsworth Agency**

Legends: Gladys Muhammad

## **Anderson, Agostino & Keller P.C.**

Black History Month 2024

From Signal to Story: 50 Years of  
WNIT Public Television

## **Angel of Hope Memorial Garden**

Miscellaneous Programming

## **Art Barn School of Art**

Miscellaneous Programming

## **Blake and Laura Augsburg**

Legends: Scott and Kim Welch

## **Tim and Mary Baker**

Legends: Gladys Muhammad

## **Billie and Dave Bankoff**

From Signal to Story: 50 Years of  
WNIT Public Television

## **Barnes & Thornburg LLP**

Legends: Gladys Muhammad

Legends: Scott and Kim Welch

## **Bartels Family Foundation**

Legends: Scott and Kim Welch

## **Caleb and Helen Bauer**

Legends: Gladys Muhammad

## **State Representative**

**Maureen Bauer**

Legends: Gladys Muhammad

## **Beacon Health System**

Legends: Scott and Kim Welch

## **Bill Deputy Foundation**

Legends: Scott and Kim Welch

## **Jeannelle and Brian Brady**

Legends: Scott and Kim Welch

## **John and Jo Broden**

From Signal to Story: 50 Years of  
WNIT Public Television

Legends: Gladys Muhammad

## **Buari Family Foundation**

Black History Month 2024

Legends: Gladys Muhammad

## **Carl Buchanon, Sr.**

Legends: Gladys Muhammad

## **David and Dr. LaRissa Buggs**

Legends: Gladys Muhammad

## **Drs. Virginia and Richmond Calvin**

Legends: Gladys Muhammad

## **Alfred and Debra Carothers & Bemis and Brenda Blake**

Legends: Gladys Muhammad

## **Center for Hospice Care**

Legends: Gladys Muhammad

Legends: Scott and Kim Welch

## **Center for the Homeless**

Miscellaneous Programming

## **Centier Bank**

Black History Month 2024

## **Paul T. Cholis**

Black History Month 2024

From Signal to Story: 50 Years of  
WNIT Public Television

Legends: Gladys Muhammad

## **City of Mishawaka - Mayor Dave Wood**

Legends: Gladys Muhammad

## **City of South Bend - Mayor James Mueller**

Black History Month 2024

From Signal to Story: 50 Years of  
WNIT Public Television

Hispanic Heritage Month 2024

Legends: Gladys Muhammad

## **Missy and Todd Cleveland**

Legends: Scott and Kim Welch

## **Marilyn Coddens**

Miscellaneous Programming

## **Lynn and Myrtie Coleman - Let's Turn It Around**

Legends: Gladys Muhammad

## **Richard and Kathleen Collins**

Legends: Scott and Kim Welch

## **Community Foundation of Elkhart County**

Legends: Scott and Kim Welch

## **Conscious Michiana**

Miscellaneous Programming

## **Corewell Health**

Black History Month 2024

## **Cosimo & Susie's A Bit of Italy**

Ciao Italia

Cooking Shows

## **Jason Critchlow, Portage Township Trustee**

Legends: Gladys Muhammad

## **Crowe LLP**

Legends: Scott and Kim Welch

## **Dr. Marvin V. Curtis**

Legends: Gladys Muhammad

## **D & W, Inc.**

Business Programming

## **Shay Davis**

Legends: Gladys Muhammad

## **Dr. Frederick Dean**

From Signal to Story: 50 Years of  
WNIT Public Television

## **Deb Childs State Farm Insurance**

Black History Month 2024

Legends: Gladys Muhammad

## **DeBartolo Performing Arts Center**

Legends: Gladys Muhammad

## **Delta Dental**

Children's Programming

## **Doshi Family Fund at Community Foundation of St. Joseph County**

From Signal to Story: 50 Years of  
WNIT Public Television

## **Mary and Greg Downes**

Legends: Gladys Muhammad

## **Drive & Shine**

Weather Channel

## **Elkhart & St. Joseph Counties Head Start Consortium**

Children's Programming

## **Elkhart Child Development Center**

Children's Programming

## **Elkhart Civic Theater**

Miscellaneous Programming

## **Elkhart County Symphony**

Miscellaneous Programming

## **Elkhart Steel Services, Inc.**

Legends: Scott and Kim Welch

## **Regina and Marcus Ellison**

Legends: Gladys Muhammad

## **Matt and Marcia Eppers and Family**

Legends: Scott and Kim Welch

## **Everwise Credit Union**

Black History Month 2024

Legends: Gladys Muhammad

Prime Time Programming

## **Faith Alive Ministries**

Legends: Gladys Muhammad

## **Family Dental Health**

Miscellaneous Programming

## **Dr. E. Michael Feltman**

Hispanic Heritage Month 2024

Legends: Gladys Muhammad

## **Bill and Kristin Fenech Family**

Legends: Scott and Kim Welch

## **Fischoff National Chamber Music Association**

Miscellaneous Programming

## **Joyce and Roger Foley**

From Signal to Story: 50 Years of  
WNIT Public Television

Legends: Gladys Muhammad

Rick Steves



**Foley & Murphy**

Legends: Gladys Muhammad

**Frankie's BBQ, Inc.**

Legends: Gladys Muhammad

**Jody and Mike Freid**

Legends: Gladys Muhammad

**GDC, Inc.**

Legends: Scott and Kim Welch

**Andre Gammage**

Legends: Gladys Muhammad

**Girls on the Run**

Miscellaneous Programming

**Maggie and Steve Goldberg**

From Signal to Story: 50 Years of  
WNIT Public Television

Legends: Gladys Muhammad

**Goshen College Music Center**

Dinner & a Book

Economic Outlook

Education Counts Michiana

Experience Michiana

Outdoor Elements

Politically Speaking

**Graham Allen Partners**

Legends: Gladys Muhammad

**James and Carol Groves**

Legends: Gladys Muhammad

**Alfred J. Guillame, Jr.  
and Melanie Smith-Guillame**

Legends: Gladys Muhammad

**Gurley Leep Automotive Family**

A Capital Fourth 2024

From Signal to Story: 50 Years of  
WNIT Public Television

Legends: Gladys Muhammad

National Memorial Day Concert 2024

**Gymnastics Michiana**

Children's Programming

**Mel Hall**

Economic Outlook

From Signal to Story: 50 Years of  
WNIT Public Television

**Richard Hayes**

Legends: Gladys Muhammad

**Hayes Towers**

Better Homes: The Play

Black History Month 2024

Legends: Gladys Muhammad

Summer in the Neighborhood

**Heart of the Warrior Fund -  
Larry Davis**

Children's Programming

**Helgeson Steel Inc.**

Legends: Scott and Kim Welch

**Jennifer and Fred Helmen**

Black History Month 2024

From Signal to Story: 50 Years of  
WNIT Public Television

Legends: Gladys Muhammad

**Debbie and Rich Hill**

Legends: Gladys Muhammad

**Hilton Garden Inn & Gillespie  
Conference Center**

Summer in the Neighborhood

**Eric Horvath**

Legends: Gladys Muhammad

**Hollis E. Hughes, Jr.**

Legends: Gladys Muhammad

**IBEW Local 153**

Black History Month 2024

Legends: Gladys Muhammad

**Impower Center, Inc.**

Legends: Gladys Muhammad

**Indiana Public Broadcasting  
Stations - Indiana Secretary of  
State**

Miscellaneous Programming

**Indiana Public Broadcasting  
Stations - Indiana State Teachers  
Association**

Miscellaneous Programming

**Indiana Public Broadcasting  
Stations - Milk Bank**

Children's Programming

**Indiana Public Broadcasting  
Stations - Visit Fort Wayne**

Children's Programming

**Indiana Trust Wealth  
Management**

From Signal to Story: 50 Years of  
WNIT Public Television

**INOVA Federal Credit Union**

Business Programming

From Signal to Story: 50 Years of  
WNIT Public Television

**InterCambio Express**

From Signal to Story: 50 Years of  
WNIT Public Television

Hispanic Heritage Month 2024  
Legends: Scott and Kim Welch

**Ivy Tech Community College,  
South Bend - Elkhart**

Black History Month 2024

Hispanic Heritage Month 2024

Legends: Gladys Muhammad

Legends: Scott and Kim Welch

**Ivy Tech Foundation**

Miscellaneous Programming

**J.A. Wagner Construction, Inc.**

Legends: Scott and Kim Welch

**Jet Technologies, Inc.**

Legends: Scott and Kim Welch

**Jewish Federation of St. Joseph  
Valley**

Legends: Gladys Muhammad

Miscellaneous Programming

**Calvin Johnson, State Farm Agent**

Legends: Gladys Muhammad

**Jones Petrie Rafinski**

Legends: Gladys Muhammad

**Jordan Lexus of Mishawaka**

Legends: Gladys Muhammad

**Amanda Judd,  
in Memory of Les Judd**

From Signal to Story: 50 Years of  
WNIT Public Television

**Judd Leighton Foundation, Inc.**

Legends: Gladys Muhammad

**Judee's**

Legends: Gladys Muhammad

Miscellaneous Programming

**Matthew Kahn  
and Janine Felder-Kahn**

Legends: Gladys Muhammad

**Margaret and Karl King**

Legends: Gladys Muhammad

**Kingdom Christian Center -  
Pastor Canneth Lee**

Legends: Gladys Muhammad

**Jonathan and Jessica Kitchens**

Legends: Gladys Muhammad

**Koontz Wagner Construction  
Services**

Legends: Gladys Muhammad

**Kosciusko County Community  
Foundation**

Education Counts Michiana

**Nancy and Jim Krzyzewski**

From Signal to Story: 50 Years of  
WNIT Public Television

**Debbie Ladyga-Block**

Legends: Gladys Muhammad

**Lake City Bank**

Economic Outlook

Education Counts Michiana

Experience Michiana

Miscellaneous Programming

Outdoor Elements

Miscellaneous Programming

**Lake City Bank Foundation**

Legends: Scott and Kim Welch

**Leeper Park Art Fair**

Miscellaneous Programming

**Linden Grill**

Legends: Gladys Muhammad

**Lucid Media**

Legends: Scott and Kim Welch

**Steve and Peg Luecke**

Legends: Gladys Muhammad

**Lush Lighting Inc.**

Miscellaneous Programming

**MLK Foundation of St. Joseph  
County**

Legends: Gladys Muhammad

**Macedonia Missionary Baptist  
Church**

Legends: Gladys Muhammad

**Sara Marcus**

Children's Programming

From Signal to Story: 50 Years of  
WNIT Public Television

Legends: Gladys Muhammad

**Martin Bros Contracting, Inc.**

Legends: Scott and Kim Welch

**McDonald Physical Therapy**

From Signal to Story: 50 Years of  
WNIT Public Television

Legends: Gladys Muhammad

**Merrill Lynch / Matthew Kahn**

From Signal to Story: 50 Years of  
WNIT Public Television

**Mex Express**

Prime Time Programming

**Michiana Antique Mall**

Miscellaneous Programming

**Michiana Eye Center**

Miscellaneous Programming

**Mid-City Supply**

This Old House

**David and Sherrie Miller**

Legends: Gladys Muhammad

**Miller Poultry**

Antiques Roadshow

Business Programming

Dinner & a Book

Finding Your Roots

Masterpiece

Miscellaneous Programming

PBS News Hour

**Anna and Sam Milligan**

Children's Programming

**Mishawaka Furniture**

Miscellaneous Programming

**Steve and Janet Mitros**

Legends: Gladys Muhammad

**Monterossa Law Group**

Legends: Gladys Muhammad

**Montessori Academy  
Edison Lakes**

Children's Programming

Hispanic Heritage Month 2024

**Dan and Jan Morrison**

Legends: Scott and Kim Welch

**Rafael Morton**

Legends: Gladys Muhammad

**Mossberg & Company**

Children's Programming

# PBS Michiana - wnit Supporters (cont'd.)

Information correct as of  
press date. For a full listing  
of program sponsors,  
please contact WNIT.

## **Libby Mountsier and Larry M. Davis**

From Signal to Story: 50 Years of  
WNIT Public Television

Legends: Gladys Muhammad

## **Judy and Britt Murphey**

Legends: Scott and Kim Welch

## **Carmi and Chris Murphy**

From Signal to Story: 50 Years of  
WNIT Public Television

Legends: Gladys Muhammad

## **NAACP South Bend - Trina Robinson, President**

Legends: Gladys Muhammad

## **Navarre Hospitality Group**

Legends: Scott and Kim Welch

## **Mark and Kathleen Neal**

Legends: Gladys Muhammad

## **Sharon and Chuck Nelson**

Legends: Gladys Muhammad

## **Mike Nicolini**

Legends: Scott and Kim Welch

## **State Senator David Niezgodski**

Legends: Gladys Muhammad

## **Niles Renaissance Faire**

Miscellaneous Programming

## **Northern Indiana Hearing Center**

Antiques Roadshow

Legends: Gladys Muhammad

## **Marcus Northern - Kennedy Expressline, Inc.**

Legends: Gladys Muhammad

## **Notre Dame Federal Credit Union**

Black History Month 2024

From Signal to Story: 50 Years of  
WNIT Public Television

Legends: Gladys Muhammad

## **Susan and David Nufer**

Legends: Gladys Muhammad

## **Mary Pat and Dick Nussbaum**

Black History Month 2024

From Signal to Story: 50 Years of  
WNIT Public Television

Legends: Gladys Muhammad

## **Omni Pro Services**

Children's Programming

Prime Time Programming

## **Operation Read USA**

Children's Programming

## **PNC Bank**

Economic Outlook

## **PNC Grow Up Great**

PBS Kids

## **Patrick Industries**

Children's Programming

Legends: Scott and Kim Welch

## **Michael and Tina Patton**

Black History Month 2024

Legends: Gladys Muhammad

## **Peacock & Company**

Miscellaneous Programming

## **Jennifer and Frank Perri**

Legends: Gladys Muhammad

## **Pfeifer, Morgan & Stesiak**

Amanpour on PBS

Austin City Limits

Black History Month 2024

Legends: Gladys Muhammad

PBS NewsHour

Prime Time Miscellaneous

## **Barb and John Phair**

Black History Month 2024

Legends: Gladys Muhammad

## **Barb and John Phair Foundation**

From Signal to Story: 50 Years of  
WNIT Public Television

## **Placon Corporation**

Legends: Scott and Kim Welch

## **Dana and Tom Pletcher**

Legends: Scott and Kim Welch

## **Tim Portolese & Dr. R. Bruce Newswanger**

Legends: Scott and Kim Welch

## **Potawatomi Zoological Society**

Children's Programming

Miscellaneous Programming

## **Alma and Bill Powell**

Legends: Gladys Muhammad

## **James L. and LuAnn Powers**

Legends: Scott and Kim Welch

## **Project Impact - South Bend, Inc.**

Legends: Gladys Muhammad

## **Sheriff Bill Redman**

Legends: Gladys Muhammad

## **Ida Reynolds Watson**

Legends: Gladys Muhammad

## **River Bend Hose Specialty**

Legends: Gladys Muhammad

This Old House

## **River Front Forge**

Miscellaneous Programming

## **RiverBend Cancer Services**

Miscellaneous Programming

## **Ronald McDonald House Charities**

Miscellaneous Programming

## **Rosenthal | Henry Capital Advisors**

Legends: Scott and Kim Welch

## **Chief Scott Ruszkowski**

Legends: Gladys Muhammad

## **Ruthmere Foundation, Inc.**

A Capital Fourth 2024

Legends: Scott and Kim Welch

## **National Memorial Day Concert 2024**

## **Doug and Nancy Sakaguchi**

Legends: Gladys Muhammad

## **Salvation Army Kroc Center**

Legends: Gladys Muhammad

## **Lorrie and Bill Schmuhl**

From Signal to Story: 50 Years of  
WNIT Public Television

Legends: Gladys Muhammad

## **Moe Scott**

Legends: Gladys Muhammad

## **Amy and Amish Shah**

Legends: Scott and Kim Welch

## **Shakespeare at Notre Dame**

Miscellaneous Programming

## **Gary and Linda Sieber**

Legends: Scott and Kim Welch

## **Silver Star Leather**

Miscellaneous Programming

Prime Time Programming

## **Lynda B. Simon**

From Signal to Story: 50 Years of  
WNIT Public Television

## **Simply Catering To You**

Black History Month 2024

Legends: Gladys Muhammad

## **Brian and Lauri Smith**

Legends: Scott and Kim Welch

## **David V. Smith, III and Karen Smith**

Legends: Scott and Kim Welch

## **Nancy and David Smith**

Legends: Scott and Kim Welch

## **South Bend Children's Dentistry**

Children's Programming

## **South Bend City Clerk & Common Council**

Legends: Gladys Muhammad

## **South Bend Civic Theatre**

Miscellaneous Programming

## **South Bend Community School Corporation**

Black History Month 2024

From Signal to Story: 50 Years of  
WNIT Public Television

Hispanic Heritage Month 2024

Legends: Gladys Muhammad

Summer in the Neighborhood

## **South Bend Cubs**

Children's Programming

Miscellaneous Programming

Prime Time Programming

## **South Bend Heritage Foundation**

Legends: Gladys Muhammad

Miscellaneous Programming

## **South Bend Human Rights Commission**

Miscellaneous Programming

## **South Bend International Airport**

BBC World News

Children's Programming

Local Programming

Miscellaneous Programming

PBS NewsHour

## **South Bend Symphony Orchestra**

Miscellaneous Programming

## **Southwest Michigan Symphony Orchestra**

Miscellaneous Programming

## **St. Clair's Butcher Shoppe and Delicatessen**

Cooking Programming

Miscellaneous Programming

## **St. Joseph County Democratic Party**

Legends: Gladys Muhammad

## **St. Joseph County Public Library**

Black History Month 2024

## **Steel Warehouse**

Legends: Gladys Muhammad

## **Stephenson's of Elkhart**

Legends: Scott and Kim Welch

## **Stifel - The Elkhart Group**

Legends: Scott and Kim Welch

**Stitch 'N Time Fabrics**

Quilting and Sewing Programming

**Joey and Kurt Stiver**

From Signal to Story: 50 Years of WNIT  
Public Television

**Studebaker National Museum**

Miscellaneous Programming

**James and Wendy Summers**

Legends: Gladys Muhammad

**Sweeney Julian Trial Attorneys**

Austin City Limits

Legends: Gladys Muhammad

Politically Speaking

**Talk With Your Baby**

Children's Programming

**Luther and Gwen Taylor**

Legends: Gladys Muhammad

**Teamsters Local 364**

Black History Month 2024

**The Antique Market  
of Michigan City**

Antiques Roadshow

Prime Time Programming

**The Arthur J. Decio Foundation**

Sesame Street

**The History Museum**

Hispanic Heritage Month 2024

Indigenous Peoples and Native  
American Heritage Month 2024

Legends: Gladys Muhammad

Miscellaneous Programming

**The Lauber Kitchen and Bar**

From Signal to Story: 50 Years of WNIT  
Public Television

**The Music Village**

Children's Programming

Miscellaneous Programming

**The National Coalition of 100  
Black Women, Inc. South Bend  
Chapter**

Legends: Gladys Muhammad

**The PC Doctor**

Business Programming

**The Rex and Alice A. Martin  
Foundation**

Dinner & a Book

Legends: Scott and Kim Welch

**THK Law, LLP**

Economic Outlook

**Janet and Larry Thompson**

From Signal to Story: 50 Years of WNIT  
Public Television

**Tire Rack**

Black History Month 2024

From Signal to Story: 50 Years of WNIT  
Public Television

Legends: Gladys Muhammad

**Tom Naquin Automotive Family**

Legends: Scott and Kim Welch

**Treat's Squire Shop**

Miscellaneous Programming

**Tri-State Maintenance**

Business Programming

News Programming

**United Way of St. Joseph County**

Education Counts Michiana

Miscellaneous Programming

**University of Notre Dame**

Black History Month 2024

Hispanic Heritage Month 2024

Legends: Gladys Muhammad

From Signal to Story: 50 Years of  
WNIT Public Television

**Upchurch Family Foundation**

Legends: Gladys Muhammad

**Robert and Debra Urbanski**

Legends: Gladys Muhammad

**Van Horne Jewelers**

From Signal to Story: 50 Years of WNIT  
Public Television

Legends: Gladys Muhammad

**Village at Winona**

Children's Programming

Dinner & a Book

History Detectives

Miscellaneous Programming

**Visit Fort Wayne**

Children's Programming

**WVPE**

Prime Time Programming

**Wellfield Botanic Gardens**

Legends: Scott and Kim Welch

**Welmpact Group**

Legends: Scott and Kim Welch

**Welter Foundation**

Legends: Scott and Kim Welch

**Karen White**

Legends: Gladys Muhammad

**Don and Pamela Wycliff**

Legends: Gladys Muhammad

**YMCA of Greater Michiana**

Children's Programming

Miscellaneous Programming

**YWCA - North Central Indiana**

Miscellaneous Programming

**Roberta and Ben Ziolkowski**

From Signal to Story: 50 Years of WNIT  
Public Television

**wPBS MICHIANA BUSINESS CLUB****Chairman's Club (\$1,000)**

Foot Solutions

Lyons Industries, Inc.

**President's Club (\$500)**

Nemeth, Feeney, Masters & Campiti,  
P.C.

Nunemaker's Coin Shop, LLC

Sylvester & Tessie Kaminski  
Foundation

**Corporate Club (\$250)**

THK Law, LLP

Stephen K. Woods, P.C.

**PBS MICHIANA KIDS CLUB**

Chick-Fil-A

Mossberg & Company

St. Joe County Public Library

Sylvester & Tessie Kaminski  
Foundation

**PRIVATE AND CORPORATE  
FOUNDATION GRANTS**

Anonymous (2)

Berrien Community Foundation

Community Foundation of Elkhart  
County

Community Foundation of St. Joseph  
County

Crossroads United Way

Dekko Foundation

Downtown South Bend, Inc.

Florence V. Carroll Charitable Trust

Fred Rogers Productions

Frederick S. Upton Foundation

John W. Anderson Foundation

Kosciusko County Community  
Foundation, Inc.

Marshall County Community  
Foundation

Stanley A. and Flora P. Clark Memorial  
Community Trust Foundation

The Pokagon Fund

Winnebago Industries Foundation

**GENERAL OPERATING GRANTS**

1st Source WNIT Fund - CFSJC

Emil Smolek Endowment Fund - CFPC

WNIT Public Television Fund - CFEC

WNIT Public Television Fund - CFSJC

WNIT Public Television Fund - MCCF

**PROMOTIONAL SUPPORT**

Alpha Graphics

Duley Press

Express Press

Mossberg & Company, Inc.

Rink Printing

WNIT Television Planner  
P.O. Box 7034  
South Bend, IN 46634-7034

Visit us at [wnit.org](http://wnit.org)



Find us on

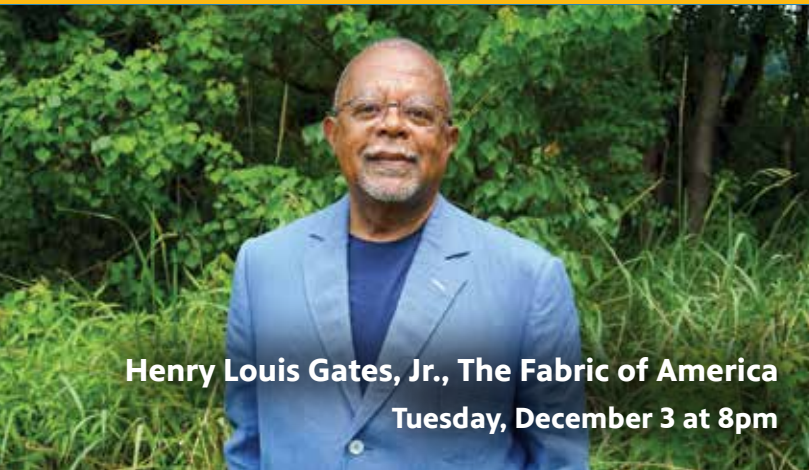


**America's Test Kitchen Celebrates 25 Years**  
Saturday, November 30 at 1:30pm  
Saturday, December 7 at 11am



**All Creatures Great and Small: Tricky & Friends**  
Sunday, December 1 at 8:30pm  
Thursday, December 6 at 3:30pm

**WNIT MEMBERSHIP CAMPAIGN**  
November 29 - December 8



**Henry Louis Gates, Jr., The Fabric of America**  
Tuesday, December 3 at 8pm



**Lucy Worsley's Holmes vs. Doyle – Doctor & Detective**  
Sunday, December 8 at 8pm